



HARLEQUIN

COLOUR 2

DIGITAL DESIGN BOOK



HARLEQUIN

**ALIVE WITH POSITIVITY AND PERSONALISED COLOUR,
HARLEQUIN CONTINUES TO #OWNTHEROOM WITH ITS LATEST
COLLECTION OF FABRICS AND WALLPAPERS, NEW FOR SS22.**

Bringing the joy of self-expression into the home, Harlequin is proud to launch the second installation of its #OWNTHEROOM series. Embracing individuality, the Harlequin Colour Book encourages us all to think differently.

Following the success of Colour 1, this latest edition makes it easier than ever to create a space that champions individuality. Curated to positively impact our mood, exciting new wallpapers and boldly patterned fabrics team with bestselling designs across a full spectrum of feel-good colour.

Whatever your style, Harlequin's wallpapers, prints, embroideries and weaves are proud to inspire ways to live beautiful. Designs and colourways have been carefully edited into one of four signature 'looks' named Rewild, Retreat, Reflect and Renew, each sharing an aesthetic that's wide and far reaching. From the kinetic movement of Enigmatic's contemporary abstract panel to the rhythmic fluidity of Melodic's feature design, bold colours highlight the beauty of natural forms alongside intricate, hand drawn florals such as the gorgeous, painterly Dahlia.

Claire Greenfield, head of design for Harlequin says, "We're so proud to introduce Harlequin

Colour 2 and all that it stands for. Since the launch of Colour 1, we've really seen our customers getting involved and discovering how they can #OWNTHEROOM in a way that makes them feel fantastic. As we're spending more time at home, it's increasingly important to be surrounded by spaces that make us happy and to help do this, we've updated our 'Own the Room' quiz. It's an online tool where consumers can discover which of our four looks best represents who they are. If you're looking to start a design story, the quiz is a great first step, and it only takes a couple of minutes to complete."

Throughout this launch, the Harlequin team has continued to work with Professor Stephen Westland, a world authority on the science behind colour. His specially commissioned whitepaper titled 'Is the colour of your home making you happy?', has informed the creation of a range of new colourways, from Japanese Ink to Forest Green, Lagoon Blue, Orchid, Brazilian Rosewood, Coral, Peony and Black Earth. Featuring an in depth mix of overlaid tones, this latest collection adds a new and exciting dimension to each of the four Harlequin looks.

THE LAUNCH COMPRISES TWO BOOKS:

Wallpaper: Harlequin Colour 2

Fabric: Harlequin Colour 2

**ALL WALLPAPERS AND PRINTED FABRICS ARE
DESIGNED AND MANUFACTURED IN ENGLAND.**

To see the collection in its entirety, please visit
[harlequin.sandersondesigngroup.com](https://www.harlequin.sandersondesigngroup.com)
#harlequincolour #OWNTHEROOM

HARLEQUIN

COLOUR 2

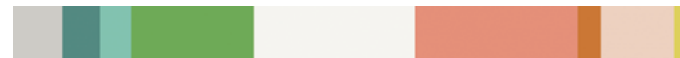
Four signature looks, one unique you.

#OWNTHEROOM

REFLECT



RETREAT



REWILD



RENEW





REFLECT

The perfect tonic to our fast-paced lives, obscured organic patterns and architectural influences layer alongside gentle textures to create a harmonious look that blends edgy angularity with transitional design. Introducing an expressive hand inspired by an abstract world, inky blues and burnt reds bring a consistency to this modern palette.

PERCEPTION

Perfect for curtains, blinds and cushions, Perception's two colour crewel work is reminiscent of artisan embroidery. Produced on a cotton satin base, the design's chunky stitching looks wonderful when paired alongside our Perception wallpaper.

GET YOUR LOOK



PERCEPTION

133869



MELODIC

112832



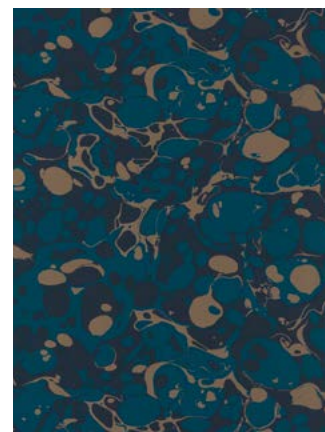
POPOVA

133886



SPECTRO STRIPE

132825



MARBLE

112837



COLOUR PROPORTIONS





ENIGMATIC

Alive with free-flowing movement and created outdoors by an expressive hand, abstract markings twist and turn on a ground of embossed vinyl. Contemporary and statemental, Enigmatic is a mural wallpaper inspired by the mid-century phenomenon of kinetic art.

GET YOUR LOOK

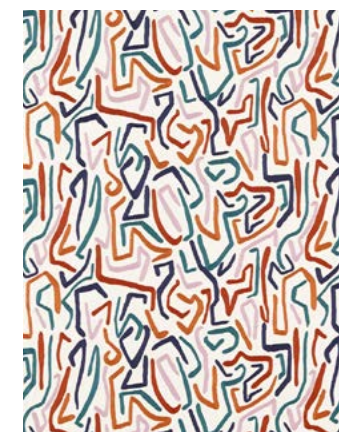


ENIGMATIC

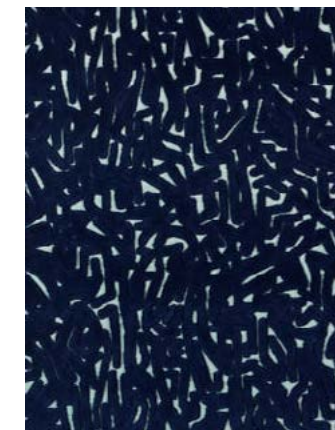
112827



COGNATE 133875



SYNCHRONIC 133873



LYRICAL 133885



POPOVA 133877



COLOUR PROPORTIONS

REFLECTED OBSIDIAN

This stunning digitally printed wallpaper panel displays a highly figurative interpretation of an original ink and salt-printed silk fabric. Perhaps it could be construed as a mountainous landscape or a glacial terrain depending on the colourways selected. Whatever your interpretation, it provides visual delight in any room.

GET YOUR LOOK



REFLECTED OBSIDIAN 112853



MARBLE 112838



MELODIC 112831



LYRICAL 133879



SYNCHRONIC 133872



COLOUR PROPORTIONS





RETREAT

A tranquil palette of naturally elegant colour, Retreat's adaptive look shares a new floral inspired intensity, accented with hints of metallics. Classic emerald greens and peony pinks team with laidback shades inspired by the warmth of a wildflower garden. Sharing an understated glamour across youthful and traditional schemes, this look creates personal hideaways that are calm, peaceful and timeless.

DAHLIA

A stunningly detailed display of one of our favourite flowers, this hand painted design is definitely best in show! Subtle variations of colour highlight the intricacies of each individual dahlia bloom, printed on 100% cotton satin.

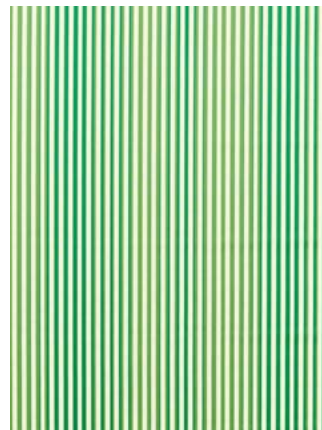
GET YOUR LOOK



DAHLIA 121083



ZINNIA 133887



CALLA 133881



NUVOLA 111070



EXUBERANCE 111476



COLOUR PROPORTIONS





REWILDED

A gorgeous ombre of colour, whether sunset, sunrise or gently rippling waters, Rewilded takes its inspiration from the natural landscapes that surround our coasts. A fantastic colour carrier, its atmospheric layers are printed on luxurious dual purpose cotton velvet.

GET YOUR LOOK



REWILDED 121079



DAHLIA 112844



IXORA 133890



EGLMISE 130985



AKOA 110635



COLOUR PROPORTIONS

NUVOLA

Wispy clouds created by tiny dots float effortlessly across this wide-width wallpaper design in contemplative colourways. Perfect for creating a sense of calm in rooms intended for relaxing.

GET YOUR LOOK



NUVOLA

111070



DAHLIA

112846



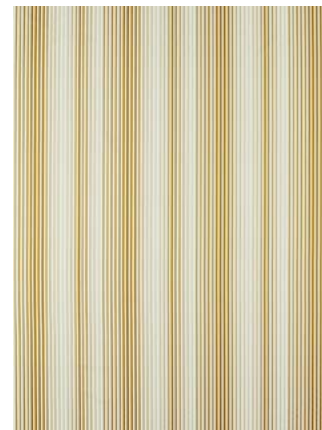
SEDUIRE

132603



DEMOISELLE

111244



CALLA

133884



COLOUR PROPORTIONS





REWILD

Appreciate the beauty of nature with invigorating, confident shades, brimming with life affirming energy.

An infusion of deep greens, pomegranate reds and terracotta tones warm and refresh our minds and our interiors. Vibrant designs, daring, uninhibited and joyous, unleash their patterned indulgence, filling our homes with layered bursts of glorious technicolour.

HELIANTHUS

Turning their heads towards glamorous interiors, impressionist sunflowers adorn this free-spirited print. Hand drawn in the Harlequin studio using pastels and paints, choose from two softer palettes printed on cotton/linen or a brighter scheme printed on dual purpose cotton velvet.

GET YOUR LOOK



HELIANTHUS

121075



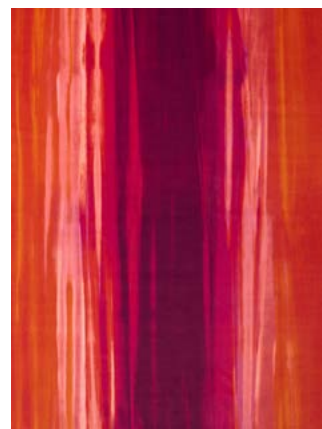
EQUIDAE

121091



FLORES

120576



REWILDED

133885



PAEONIA

112841



COLOUR PROPORTIONS





PAEONIA

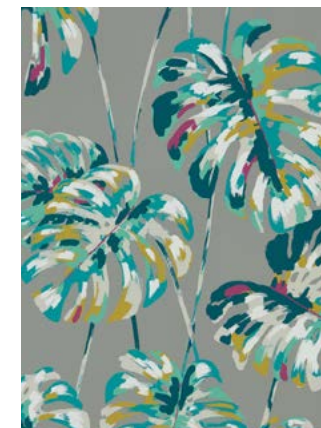
Retaining its original large scale, oversized peony blooms make an incredible statement across this archive wallpaper, contrasting confidently against a dark, chalky ground. The Black Earth colourway is finished with a delicate metallic centre, which catches the light beautifully.

GET YOUR LOOK



PAEONIA

112841



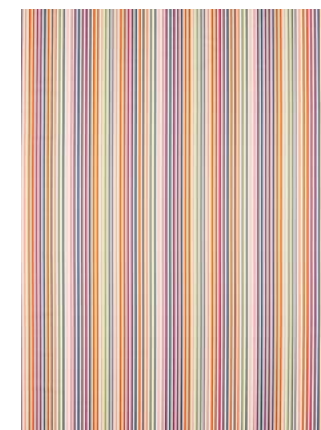
KELAPA

111752



FLORES

120573



CALLA

133883



IXORA

133892



COLOUR PROPORTIONS

SANGUINE

Looking out across a gently swaying meadow, our loosely painted floral scene captures the spirit of summer. Slightly impressionist in style, the design's two colour groups offer a choice of brighter or pared back decorating options.

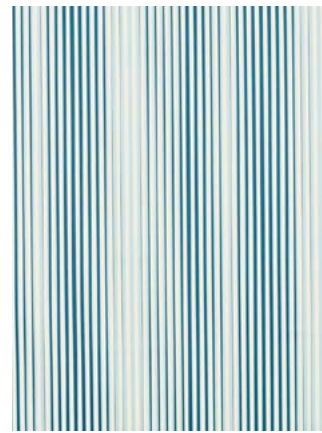
GET YOUR LOOK



SANGUINE 112839



PAEONIA 121088



CALLA 133882



SANGUINE 121080



REWILDED 121078



COLOUR PROPORTIONS





RENEW

Uplifting, regenerative and with a natural, light and airy glow. Small movements of colour adorn tinted whites in a landscape inspired scheme that reaches from sea to sky. Elegant and ethereal, this calming look combines soft relaxing colours with subtly detailed design.

ANKARA

From subtle to bold, interlocking diamonds zig-zag from top to toe across the four varied colourways of our surface print wallpapers. Mix and match for an eclectic look or keep consistent for a relaxing geometric scheme.

GET YOUR LOOK



ANKARA 112848



AMITY 111888



ORLENA 111877



ZINNIA 133889



REWILDED 121076



COLOUR PROPORTIONS





DENTELLA

Add an instant touch of glamour with this plush cut velvet fabric in metallic colourways with a beautiful drape quality.

GET YOUR LOOK



DENTELLA 132680



ANKARA 112850



YASUNI 120748



SANGUINE 112840



HELIANTHUS 121073



COLOUR PROPORTIONS

ORLENA

An elegant woven jacquard fabric design in sophisticated colourways with large feather motifs accented with hints of metallic on a beautiful sheen background. A wallpaper of the same name is also available.

GET YOUR LOOK



ORLENA

132665



FLORES

120575



ANKARA

112847



HELIANTHUS

121074



AMITY

111885



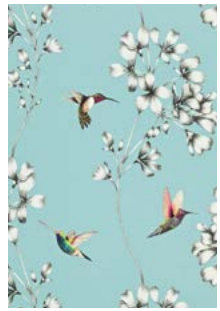
COLOUR PROPORTIONS



WALLPAPER INDEX



AKOA 110635



AMAZILIA 111060



AMAZILIA 111062



AMITY 111885



AMITY 111888



ANKARA 112847



ANKARA 112848



ANKARA 112849



ANKARA 112850



DAHLIA 112843



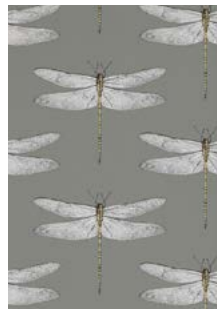
DAHLIA 112844



DAHLIA 112845



DAHLIA 112846



DEMOISELLE 111242



DEMOISELLE 111243



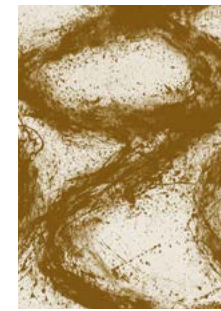
DEMOISELLE 111244



EGLMISE 110617



ENIGMATIC 112827



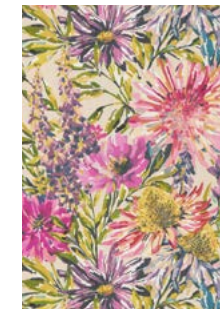
ENIGMATIC 112828



EXUBERANCE 111476



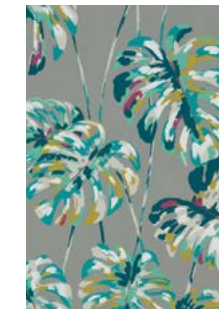
EXUBERANCE 111477



FLOREALE 111497



IYANU 111770



KELAPA 111752



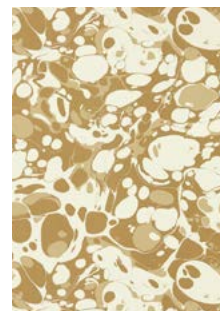
KELAPA 111753



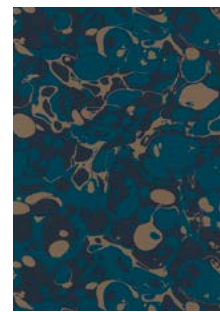
KOTO 110894



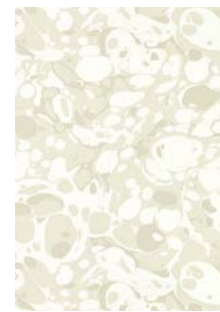
MAKALU 111584



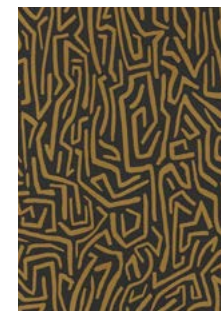
MARBLE 112836



MARBLE 112837



MARBLE 112838



MELODIC 112829



MELODIC 112830



MELODIC 112831



MELODIC 112832



NALINA 111051



NUVOLA 111070



OPERETTA 111236



ORLENA 111877



ORLENA 111878



PAEONIA 112841



PAEONIA 112842



PERCEPTION 112833



PERCEPTION 112834



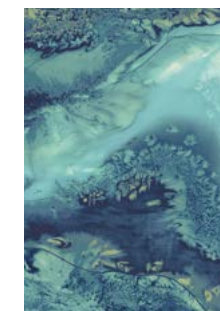
QUINTESSENCE 111488



QUINTESSENCE 111775



REFLECTED OBSIDIAN 112853



REFLECTED OBSIDIAN 112852



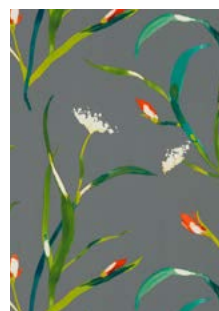
SANGUINE 112839



SANGUINE 112840



SAONA 111756



SAONA 111758



SEDUIRE 111736



SUMI 110883



SUMI 110886



SUMI 111573



YASUNI 111760



YASUNI 111761

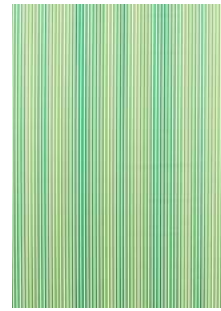


YASUNI 111763

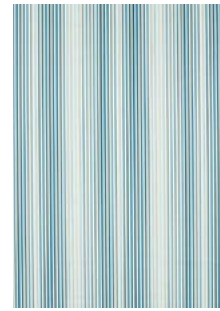
FABRIC INDEX



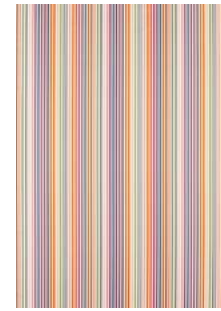
AMITY 132670



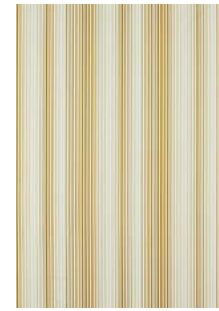
CALLA 133881



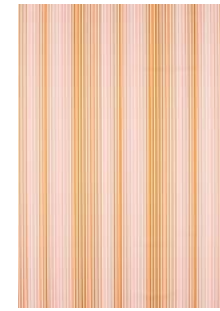
CALLA 133882



CALLA 133883



CALLA 133884



CALLA 133893



CAYO 132638



CAYO 132639



COGNATE 133874



COGNATE 133875



DAHLIA 121081



DAHLIA 121083



DAHLIA 121084



DAHLIA 121085



DEMOISELLE 120432



DEMOISELLE 120433



DEMOISELLE 120435



DENTELLA 132678



DENTELLA 132680



EGLMISE 130985



ELOISE 131544



EQUIDAE 121090



EQUIDAE 121091



EXUBERANCE 120804



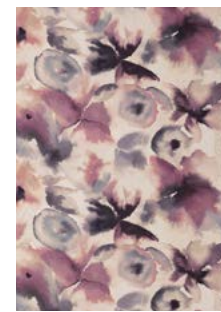
FLOREALE 120524



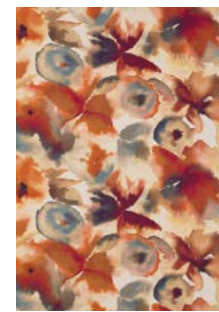
FLOREALE 120525



FLORES 120573



FLORES 120575



FLORES 120576



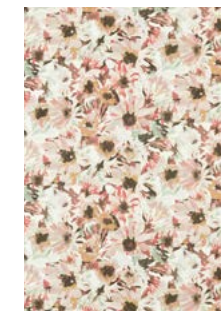
HAMADA 132887



HAMADA 132884



HELIANTHUS 121073



HELIANTHUS 121074



HELIANTHUS 121075



ISSORIA 132250



ISSORIA 132252



ISSORIA 132254



IXORA 133890



IXORA 133891



IXORA 133892



IXORA 133894



IYANU VOILE 120736



KELAPA 132646



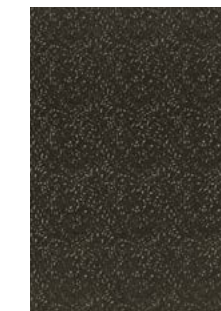
KELAPA 132647



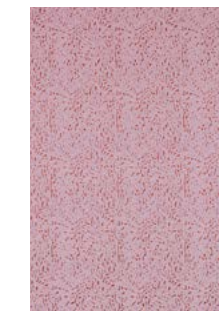
LOUELLA 132654



LYRICAL 133878



LYRICAL 133879



LYRICAL 133880



LYRICAL 133885



MELODIC 121069



MELODIC 121070



MELODIC 121071



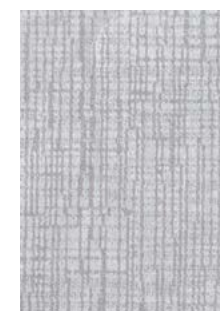
MOMENTUM ASCENT 4416



ORLENA 132665



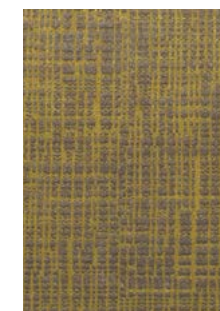
ORLENA 132667



OSAMU 131432



OSAMU 131434



OSAMU 131438

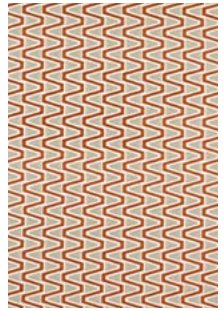


PAEONIA 121087

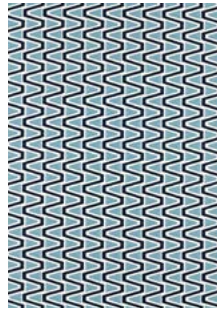


PAEONIA 121088

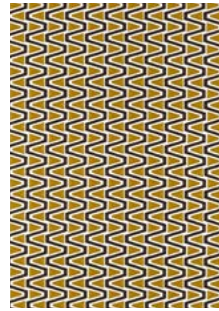
FABRIC INDEX



PERCEPTION 133869



PERCEPTION 133870



PERCEPTION 133871



POPOVA 133876



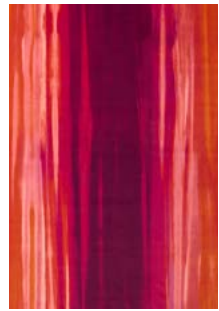
POPOVA 133877



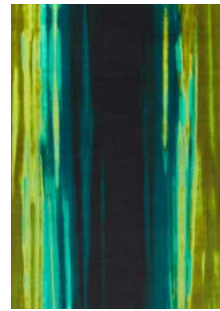
POPOVA 133886



REWILDED 121076



REWILDED 121077



REWILDED 121078



REWILDED 121079



RHYTHM 121089



SANGUINE 121080



SAONA 120739



SEDUIRE 132603



SPECTRO STRIPE 132825



SYNCHRONIC 33872



SYNCHRONIC 33873



YASUNI 120745



SPECTRO STRIPE 132826



SPECTRO STRIPE 132827



YASUNI 120746



YASUNI 120747



YASUNI 120748



ZINNIA 133887



ZINNIA 133888



ZINNIA

133889