

HARLEQUIN

KASURI





THE ART OF TRANQUILITY
IN EVERY BRUSH MARK AND STITCH

IN A STATEMENT COLLECTION, KASURI BRINGS THE TRANQUILITY OF JAPANESE INTERIORS INTO FOCUS THROUGH INSPIRED FABRIC, WEAVE AND WALLPAPER DESIGNS.

A deep sense of renewal pervades this collection. Warm tones, rustic textures, and age-old techniques inspire Kasuri as it unfolds in layers of transitional style and the art of Japanese living, ingrained with the essence of Harlequin.

Highly textural woven fabrics define the collection. Japanese-inspired weave and embroidery techniques reveal warp print jacquards, vertical striés and full-coverage embroideries encapsulated in a restful yet inspiring collection for interiors.

Art meets nature in every brush mark and stitch. Wood grain wallpapers pair with intriguing, printed designs. Mixing digital printing with traditional techniques creates beautiful effects. All-over embosses reference papyrus papers for textural finishes, while metallic sheens add lustre and elevation to schemes.

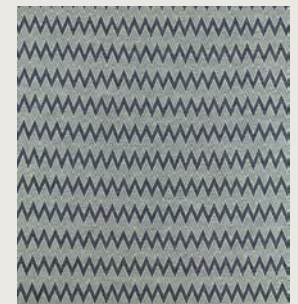


KIMONO FABRIC

Taken from an original Japanese warp print kimono, Kimono has been printed onto 100% cotton. As a wide-width design, Kimono explores the inspiration behind its name on a lovely scale.



KIMONO I21269



AKARI I34609



HANSHA I34572

[CLICK ON THE PRODUCT IMAGES TO DISCOVER MORE](#)

KIMONO FABRIC COLOURWAYS



121267



121268



121269



121270



121271

CLICK ON THE PRODUCT IMAGES TO DISCOVER MORE

KIMONO FABRIC TECHNICAL

TYPE	Print
COMPOSITION	100% Cotton
WIDTH	302cm
REPEAT	126.5cm
PATTERN MATCH	Half Drop
DOMESTIC USAGE	General Upholstery, Curtains, Blinds, Cushions
CONTRACT USAGE	Cushions
MARTINDALE	30,000



HARUKA FABRIC

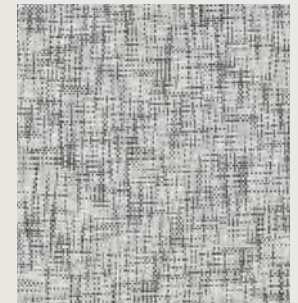
This design is a warp-printed jacquard with a ribbed effect replicating silk. Printing the warp thread before weaving elevates Haruku's layered brush marks in the design, which add depth and tonality.



HARUKA 134584



AIKO 134562



CESTINO 134556

[CLICK ON THE PRODUCT IMAGES TO DISCOVER MORE](#)

HARUKA FABRIC COLOURWAYS



134584



134585



134586



134617



134619

CLICK ON THE PRODUCT IMAGES TO DISCOVER MORE

HARUKA FABRIC TECHNICAL

TYPE	Print
COMPOSITION	64% Cotton, 36% Recycled Polyester
WIDTH	141cm
REPEAT	68cm
PATTERN MATCH	Straight
DOMESTIC USAGE	Light Upholstery, Curtains, Blinds, Cushions
CONTRACT USAGE	Curtains, Blinds, Cushions
MARTINDALE	20,000



HIKARI FABRIC

Hikari plays with triangle forms, running down the weave, creating a soft geometric pattern. Light and shade are created in the triangular design. Inspired by nature, Hikari is a transitional weave.



HIKARI 134583



EIZOU 121275



KADO 134600

[CLICK ON THE PRODUCT IMAGES TO DISCOVER MORE](#)

HIKARI FABRIC COLOURWAYS



I34582



I34583

[CLICK ON THE PRODUCT IMAGES TO DISCOVER MORE](#)

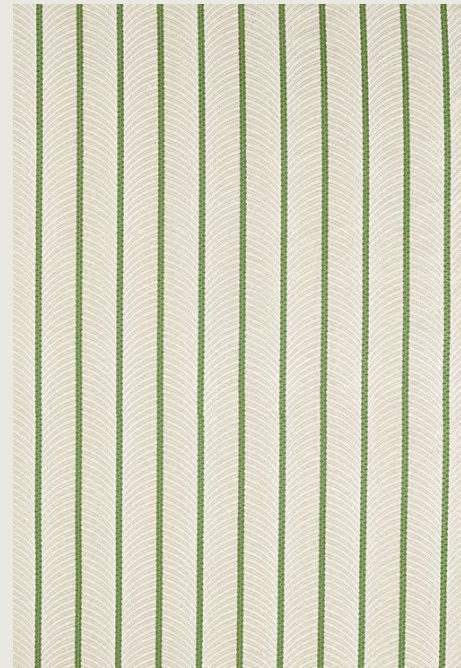
HIKARI FABRIC TECHNICAL

TYPE	Weave
COMPOSITION	35% Viscose, 24% Polyester, 22% Cotton, 19% Linen
WIDTH	292.6cm
REPEAT	50.8cm
PATTERN MATCH	Straight
DOMESTIC USAGE	Curtains, Blinds, Cushions
CONTRACT USAGE	Cushions



NATSU FABRIC

An almost full-coverage embroidery, Natsu translates growing grass stems into linear stitching, while the soft arches of the ground embroidery have an elegant natural quality.



NATSU 134590



KIMONO 113226



SPECKLE 134554

[CLICK ON THE PRODUCT IMAGES TO DISCOVER MORE](#)

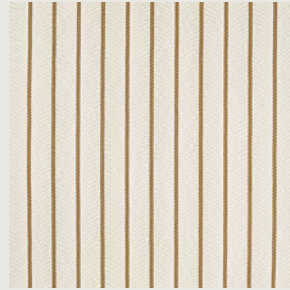
NATSU FABRIC COLOURWAYS



134590



134591



134592

CLICK ON THE PRODUCT IMAGES TO DISCOVER MORE

NATSU FABRIC TECHNICAL

TYPE	Weave
COMPOSITION	38% Viscose, 32% Cotton, 30% Polyester
WIDTH	132cm
REPEAT	2.7cm
PATTERN MATCH	Straight
DOMESTIC USAGE	Curtains, Blinds, Cushions
CONTRACT USAGE	Curtains, Blinds, Cushions

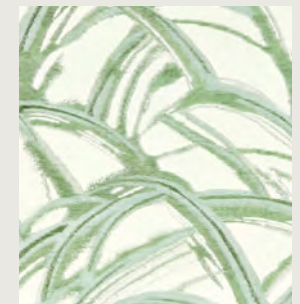


ONSEN FABRIC

An almost full-coverage embroidery, Natsu translates growing grass stems into linear stitching, while the soft arches of the ground embroidery have an elegant natural quality.



ONSEN 134594



KIMONO 113226



NATSU 134590

CLICK ON THE PRODUCT IMAGES TO DISCOVER MORE

ONSEN FABRIC COLOURWAYS



134593



134594

[CLICK ON THE PRODUCT IMAGES TO DISCOVER MORE](#)

ONSEN FABRIC TECHNICAL

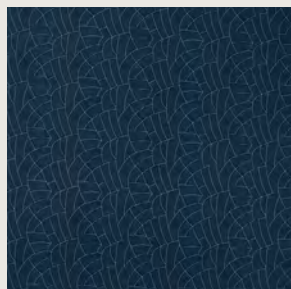
TYPE	Weave
COMPOSITION	80% Cotton, 14% Viscose, 6% Polyester
WIDTH	127cm
REPEAT	77.8cm
PATTERN MATCH	Half Drop
DOMESTIC USAGE	Curtains, Blinds, Cushions
CONTRACT USAGE	Curtains, Blinds, Cushions



AVRI FABRIC

With a design style reminiscent of rice fields, Avri is an all-over embroidery in two contrasting colourways. The stitching technique is accented in both colourways. Indigo & Sky has been indigo dyed for depth of colour.

AVRI FABRIC COLOURWAYS



I34595



I34596

[CLICK ON THE PRODUCT IMAGES TO DISCOVER MORE](#)

AVRI FABRIC TECHNICAL

TYPE	Weave
COMPOSITION	52% Cotton, 48% Polyester
WIDTH	136cm
REPEAT	23cm
PATTERN MATCH	Straight
DOMESTIC USAGE	Curtains, Blinds, Cushions
CONTRACT USAGE	Curtains, Blinds, Cushions

CEILO FABRIC

Ceilo is a printed fabric with an embroidery stitch. Featuring abstract mark making and beautiful watercolour movement, the fabric is highlighted with a delicate braid and machine stitching.

CEILO FABRIC COLOURWAYS



134575



134576

[CLICK ON THE PRODUCT IMAGES TO DISCOVER MORE](#)

CEILO FABRIC TECHNICAL

TYPE	Weave
COMPOSITION	42% Linen, 39% Cotton, 19% Polyester
WIDTH	139.6cm
REPEAT	84.2cm
PATTERN MATCH	Straight
DOMESTIC USAGE	Curtains, Blinds, Cushions
CONTRACT USAGE	Curtains, Blinds, Cushions

EIZOU FABRIC

Featuring a new cloth to Harlequin, Eizou has a silk striae running through for lovely twists of colour. Inspired by a Japanese silk, which uses the batik technique, this flower's delicately flowing stems retain an authentic Japanese style, referencing nature in its elegant

EIZOU FABRIC COLOURWAYS



121275



121277

[CLICK ON THE PRODUCT IMAGES TO DISCOVER MORE](#)

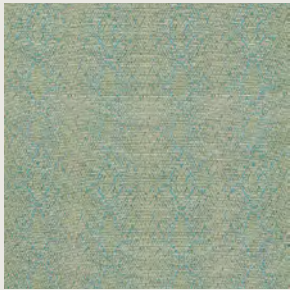
EIZOU FABRIC TECHNICAL

TYPE	Print
COMPOSITION	51% Cotton, 31% Linen, 18% Polyester
WIDTH	140cm
REPEAT	84.43cm
PATTERN MATCH	Straight
DOMESTIC USAGE	Curtains, Blinds, Cushions
CONTRACT USAGE	Cushions

HANSHA FABRIC

Hansha features a modern damask in an overlay of colour on a jacquard base. This modern take on traditional design depicts a diamond trellis with textural markings resembling animal prints.

HANSHA FABRIC COLOURWAYS



134572



134573



134574

[CLICK ON THE PRODUCT IMAGES TO DISCOVER MORE](#)

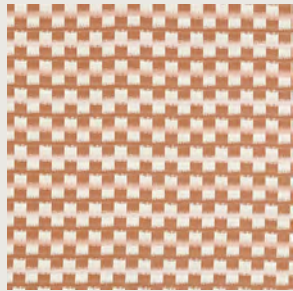
HANSHA FABRIC TECHNICAL

TYPE	Weave
COMPOSITION	81% Polyester, 19% Cotton
WIDTH	138.6cm
REPEAT	66.2cm
PATTERN MATCH	Straight
DOMESTIC USAGE	Curtains, Blinds, Cushions
CONTRACT USAGE	Cushions

HARU FABRIC

Haru's tapestry-esque jacquard evokes a checkerboard effect with a horizontal ikat stripe as a highlight colour across three colourways.

HARU FABRIC COLOURWAYS



134577



134578



134579

[CLICK ON THE PRODUCT IMAGES TO DISCOVER MORE](#)

HARU FABRIC TECHNICAL

TYPE	Weave
COMPOSITION	84% Cotton, 16% Polyester
WIDTH	137cm
REPEAT	9.7cm
PATTERN MATCH	Straight
DOMESTIC USAGE	Curtains, Blinds, Cushions
CONTRACT USAGE	Curtains, Blinds, Cushions

JUNIPER FABRIC

With an architectural grid feel typical of Japanese design, Juniper has thick stitching to create a raised effect and a sophisticated horizontal geometric. Natural grounds enhance the overall effect.

JUNIPER FABRIC COLOURWAYS



134601



134615



134616

[CLICK ON THE PRODUCT IMAGES TO DISCOVER MORE](#)

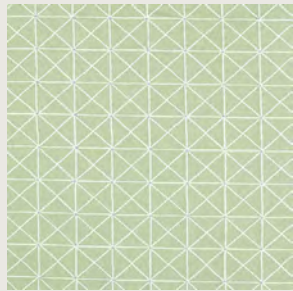
JUNIPER FABRIC TECHNICAL

TYPE	Weave
COMPOSITION	35% Polyester, 28% Cotton, 13% Linen, 12% Viscose, 12% Wool
WIDTH	137cm
REPEAT	11.5cm
PATTERN MATCH	Straight
DOMESTIC USAGE	Curtains, Blinds, Cushions
CONTRACT USAGE	Curtains, Blinds, Cushions

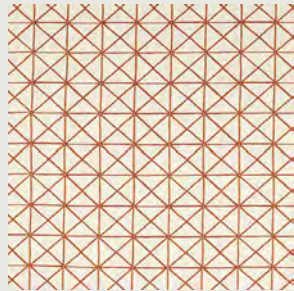
KADO FABRIC

Kado is a trellis weave design with the look of a hand-tied knot effect in a highlighting colour. A woven fabric with a base cloth of 100% cotton, Kado has a lovely structure and drape for interiors.

KADO FABRIC COLOURWAYS



134597



134598



134599



134600

[CLICK ON THE PRODUCT IMAGES TO DISCOVER MORE](#)

KADO FABRIC TECHNICAL

TYPE	Weave
COMPOSITION	56% Polyester, 27% Cotton, 17% Linen
WIDTH	136cm
REPEAT	11.8cm
PATTERN MATCH	Straight
DOMESTIC USAGE	Curtains, Blinds, Cushions
CONTRACT USAGE	Curtains, Blinds, Cushions

KENGAI FABRIC

Inspired by bonsai trees, Kengai is a naturalistic and unique design. A warp printing technique is applied, creating an Ikat effect. With a soft vertical strié this small-scale design is full of interest. A coordinating wide-width wallpaper is available.

KENGAI FABRIC COLOURWAYS



134587



134588



134589



134620

[CLICK ON THE PRODUCT IMAGES TO DISCOVER MORE](#)

KENGAI FABRIC TECHNICAL

TYPE	Weave
COMPOSITION	64% Cotton, 36% Recycled Polyester
WIDTH	143cm
REPEAT	61cm
PATTERN MATCH	Half Drop
DOMESTIC USAGE	Light Upholstery, Curtains, Blinds, Cushions
CONTRACT USAGE	Curtains, Blinds, Cushions
MARTINDALE	20,000

MOJI FABRIC

Like falling leaves drifting from a Buckthorn, Moji has an organic feel. Natural ground colours elevate the delicate leaves, printed on 100% cotton wide-width fabric. Painted as artwork, Moji is a restful and soothing design. A coordinating wallpaper is available.

MOJI FABRIC COLOURWAYS



121272



121273

[CLICK ON THE PRODUCT IMAGES TO DISCOVER MORE](#)

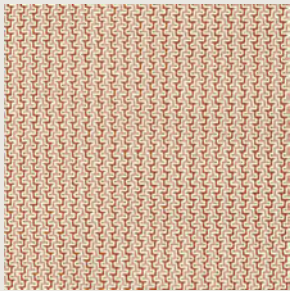
MOJI FABRIC TECHNICAL

TYPE	Print
COMPOSITION	100% Cotton
WIDTH	344cm
REPEAT	149.9cm
PATTERN MATCH	Half Drop
DOMESTIC USAGE	General Upholstery, Curtains, Blinds, Cushions
CONTRACT USAGE	Cushions
MARTINDALE	30,000

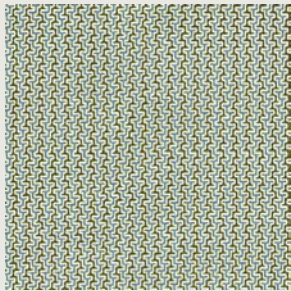
SASHIKO FABRIC

Sashiko has a woven blanket feel with a small-scale design that feels cosy and warm. Reminiscent of the tradition of mark-making, Sashiko is the perfect coordinating weave.

SASHIKO FABRIC COLOURWAYS



134580



134581

[CLICK ON THE PRODUCT IMAGES TO DISCOVER MORE](#)

SASHIKO FABRIC TECHNICAL

TYPE	Weave
COMPOSITION	51% Cotton, 49% Polyester
WIDTH	140cm
REPEAT	2.3cm
PATTERN MATCH	Straight
DOMESTIC USAGE	Light Upholstery, Curtains, Blinds, Cushions
CONTRACT USAGE	Curtains, Blinds, Cushions
MARTINDALE	10k





MOJI WALLPAPER

Like falling leaves drifting from a Buckthorn, Moji has a natural ground with an all-over embossed texture, painted with pastel tones as a piece of artwork, intensifying its organic nature. A coordinating wide-width fabric is available.



MOJI 113194



HANSHA 113211



ONSEN 134594

[CLICK ON THE PRODUCT IMAGES TO DISCOVER MORE](#)

MOJI WALLPAPER COLOURWAYS



113193



113194

[CLICK ON THE PRODUCT IMAGES TO DISCOVER MORE](#)

MOJI WALLPAPER TECHNICAL

COMPOSITION	Non Woven
WIDTH	68.6cm
REPEAT	76.2cm
PATTERN MATCH	Half Drop



WOOD BLOCKS WALLPAPER

A wood veneer paper with a gloss detail creates the look of traditional Japanese panelling in the faux bois style. Inspired by Japanese living, Wood Veneer comes in a wide width.



WOOD BLOCKS 113199



AIKO 134565



EIZOU 121275

[CLICK ON THE PRODUCT IMAGES TO DISCOVER MORE](#)

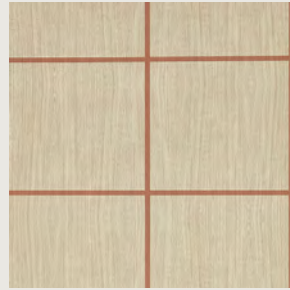
WOOD BLOCKS WALLPAPER COLOURWAYS



113198



113199



113200



113201



113202

CLICK ON THE PRODUCT IMAGES TO DISCOVER MORE

WOOD BLOCKS WALLPAPER TECHNICAL

COMPOSITION	Non Woven
WIDTH	68.6cm
REPEAT	64cm
PATTERN MATCH	Straight



MISCANTHUS PANEL

Hand-painted with the finest detail, an ombre ground sets the scene for the gentle Miscanthus, wispy foliage, swaying in a breeze. Simplistic in nature, this A and B panel design is calming and rhythmical, with a softness pervading all three colourways.



MISCANTHUS 113230



AKARI WEAVES 134609



SPECKLE 131873

[CLICK ON THE PRODUCT IMAGES TO DISCOVER MORE](#)

MISCANTHUS PANEL COLOURWAYS



113230



113231



113232

CLICK ON THE PRODUCT IMAGES TO DISCOVER MORE

MISCANTHUS PANEL TECHNICAL

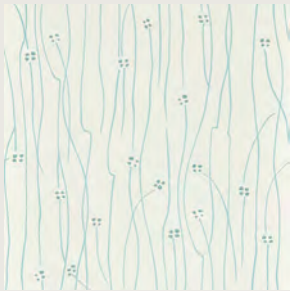
COMPOSITION	Non Woven
WIDTH	68.6cm
REPEAT	300cm
PATTERN MATCH	Straight



EIZOU WALLPAPER

Inspired by a Japanese silk, which uses the batik technique, this delicately flowing stem of flowers retain an authentic Japanese style, referencing nature in its elegant simplicity.

EIZOU WALLPAPER COLOURWAYS



113214



113215



113216

[CLICK ON THE PRODUCT IMAGES TO DISCOVER MORE](#)

EIZOU WALLPAPER TECHNICAL

COMPOSITION	Non Woven
WIDTH	52cm
REPEAT	63.9cm
PATTERN MATCH	Straight

ELEMENTS

Elements is a wide-width wallpaper with a misty, ethereal undertone achieved by the movement and twists of colour, which softly graduate in a horizontal ombré. The organic stripes of this vinyl are created by layering and then crushing tissue paper.

ELEMENTS WALLPAPER COLOURWAYS



111846



111847

[CLICK ON THE PRODUCT IMAGES TO DISCOVER MORE](#)

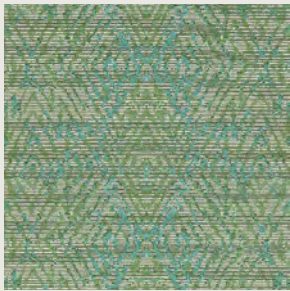
ELEMENTS WALLPAPER TECHNICAL

COMPOSITION	Non Woven
WIDTH	68.6cm
REPEAT	76.2cm
PATTERN MATCH	Straight

HANSHA WALLPAPER

Hansha features a modern damask that gives walls the look of fabric. An overlay of colour with paint marks feels hand-finished. This modern take on traditional paper depicts a broken diamond trellis with textural markings like an animal print. A coordinating jacquard fabric is available.

HANSHA WALLPAPER COLOURWAYS



113211



113212



113213

[CLICK ON THE PRODUCT IMAGES TO DISCOVER MORE](#)

HANSHA WALLPAPER TECHNICAL

COMPOSITION	Non Woven
WIDTH	52cm
REPEAT	63.9cm
PATTERN MATCH	Straight

KENGAI WALLPAPER

Like a bonsai tree, Kengai is naturalistic and unique. Each design's colour and metallic and matt selections accent its wonderfully organic, flowing repeat. Perfect in a wide-width format.

KENGAI WALLPAPER COLOURWAYS



113203



113204



113205



113206

[CLICK ON THE PRODUCT IMAGES TO DISCOVER MORE](#)

KENGAI WALLPAPER TECHNICAL

COMPOSITION	Vinyl
WIDTH	68.6cm
REPEAT	68.6cm
PATTERN MATCH	Half Drop

KIMONO WALLPAPER

This design, taken from an original Japanese warp print kimono, has been translated onto wallpaper. With the feeling of fabric on the wall, Kimono's scale is perfectly suited to this wide-width format. A very special transitional design.

KIMONO WALLPAPER COLOURWAYS



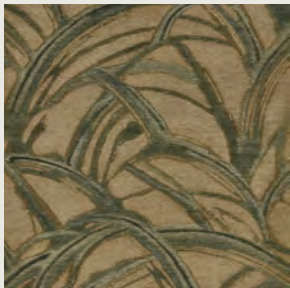
113226



113227



113228



113229

[CLICK ON THE PRODUCT IMAGES TO DISCOVER MORE](#)

KIMONO WALLPAPER TECHNICAL

COMPOSITION	Non Woven
WIDTH	68.6cm
REPEAT	119.8cm
PATTERN MATCH	Half Drop

MANSA WALLPAPER

Mansa is a wide-width design displaying a neat basket weave look across a lovely, muted colour palette. Metallic highlights bring a subtle elevation to this textural design, and new colour additions add to its liveable quality in interiors.

MANSA WALLPAPER COLOURWAYS



112109



112111



112112



112113



113117



113118

CLICK ON THE PRODUCT IMAGES TO DISCOVER MORE

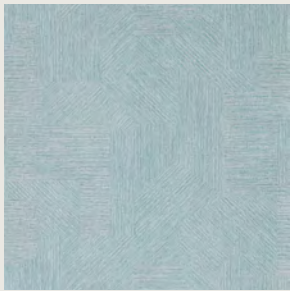
MANSA WALLPAPER TECHNICAL

COMPOSITION	Vinyl
WIDTH	68.6cm
REPEAT	0cm
PATTERN MATCH	Random

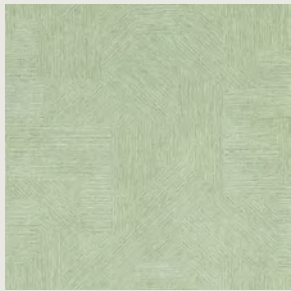
MOKUME WALLPAPER

Inspired by an original silk grass cloth, this design has been cut up to create a geometric pattern; then jig-sawed together for a therapeutic design in a wide-width format. Some designs feature a soft metallic sheen.

MOKUME WALLPAPER COLOURWAYS



113222



113223



113224



113225

[CLICK ON THE PRODUCT IMAGES TO DISCOVER MORE](#)

MOKUME WALLPAPER TECHNICAL

COMPOSITION	Vinyl
WIDTH	68.6cm
REPEAT	68.6cm
PATTERN MATCH	Half Drop

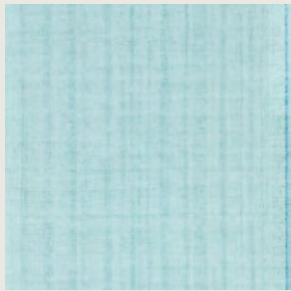
PAPYRUS WALLPAPER

With an all-over texture echoing that of a papyrus, a colour highlight has been added to repeat at the edge of each roll to look like a hand-finished trim. Papyrus is a wide-width vinyl wallcovering.

PAPYRUS WALLPAPER COLOURWAYS



113195



113196



113197

[CLICK ON THE PRODUCT IMAGES TO DISCOVER MORE](#)

PAPYRUS WALLPAPER TECHNICAL

COMPOSITION	Vinyl
WIDTH	68.6cm
REPEAT	0cm
PATTERN MATCH	Random

SOBUKU WALLPAPER

Taken from an original marbled paper, Soboku has transformed into a repeat with a metallic layer throughout. A petit, liveable scale perfectly suits this wide-width vinyl with sand emboss. Ideal for high-traffic spaces.

SOBUKU WALLPAPER COLOURWAYS



113219



113220



113221

[CLICK ON THE PRODUCT IMAGES TO DISCOVER MORE](#)

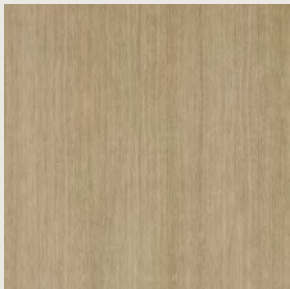
SOBUKU WALLPAPER TECHNICAL

COMPOSITION	Vinyl
WIDTH	68.6cm
REPEAT	17.2cm
PATTERN MATCH	Straight

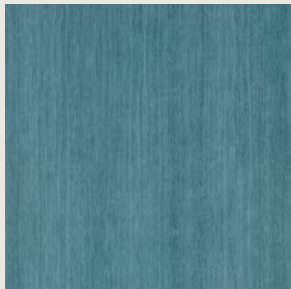
WOOD VENEER WALLPAPER

This faux bois effect deep emboss design imitates the look and texture of wood. The classic wood colours of pine, silver birch, and mahogany meet a classic blue, an elegant shade accenting this wood effect design. Wood Veneer comes in a wide width.

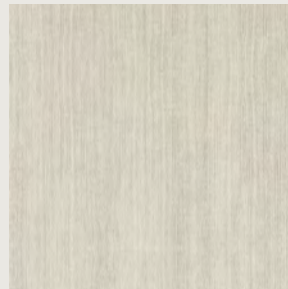
WOOD VENEER WALLPAPER COLOURWAYS



113207



113208



113209



113210

CLICK ON THE PRODUCT IMAGES TO DISCOVER MORE

WOOD VENEER WALLPAPER TECHNICAL

COMPOSITION	Vinyl
WIDTH	68.6cm
REPEAT	0cm
PATTERN MATCH	Random

FABRIC INDEX



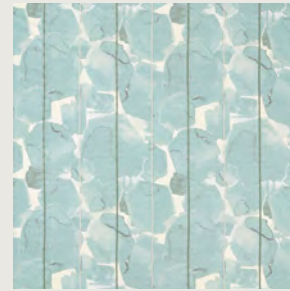
AVRI 134595



AVRI 134596



CEILO 134575



CEILO 134576



EIZOU 121275



EIZOU 121277



HANSHA 134572



HANSHA 134573



HANSHA 134574



HARU 134577



HARU 134578



HARU 134579



HARUKA 134584



HARUKA 134585



HARUKA 134586



HARUKA 134617



HARUKA 134619



HIKARI 134582

FABRIC INDEX



HIKARI 134583



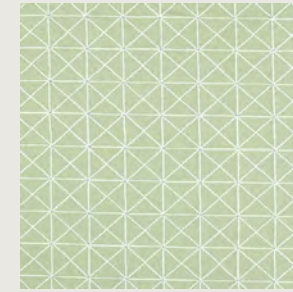
JUNIPER 134601



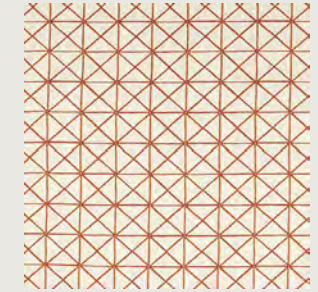
JUNIPER 134615



JUNIPER 134616



KADO 134597



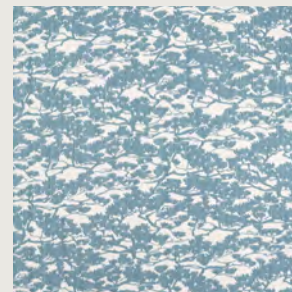
KADO 134598



KADO 134599



KADO 134600



KENGAI 134587



KENGAI 134588



KENGAI 134589



KENGAI 134620



KIMONO 121267



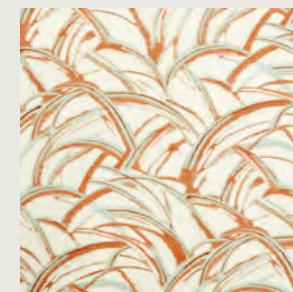
KIMONO 121268



KIMONO 121269



KIMONO 121270



KIMONO 121271



MOJI 121272

FABRIC INDEX



MOJI

121273



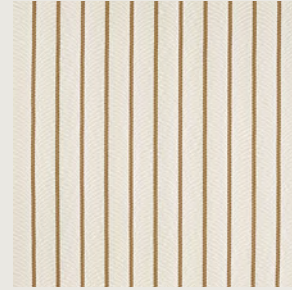
NATSU

134590



NATSU

134591



NATSU

134592



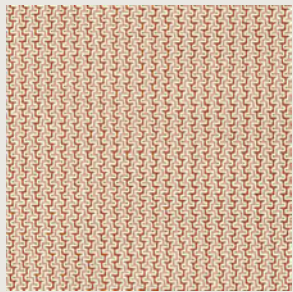
ONSEN

134593



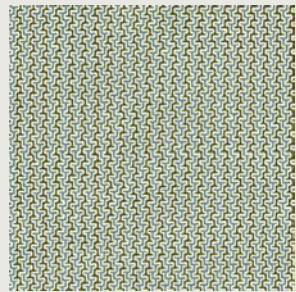
ONSEN

134594



SASHIKO

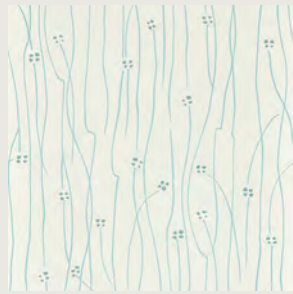
134580



SASHIKO

134581

WALLPAPER INDEX



EIZOU 113214



EIZOU 113215



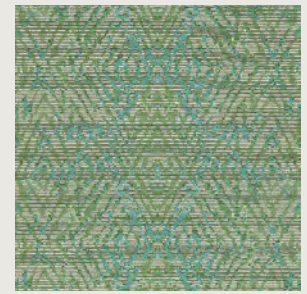
EIZOU 113216



ELEMENTS 111846



ELEMENTS 111847



HANSHA 113211



HANSHA 113212



HANSHA 113213



KENGAI 113203



KENGAI 113204



KENGAI 113205



KENGAI 113206



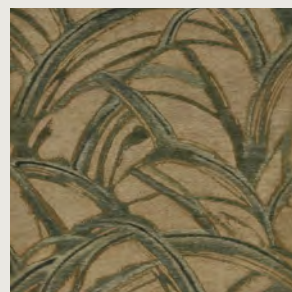
KIMONO 113226



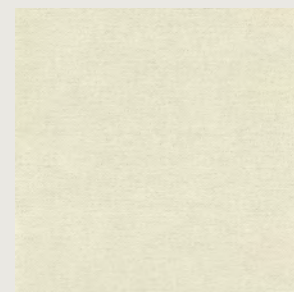
KIMONO 113227



KIMONO 113228



KIMONO 113229

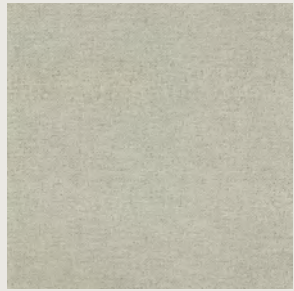


MANSA 112109



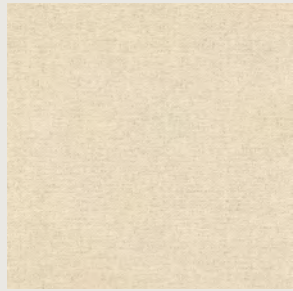
MANSA 112111

WALLPAPER INDEX



MANSAs

112112



MANSAs

112113



MANSAs

113117



MANSAs

113118



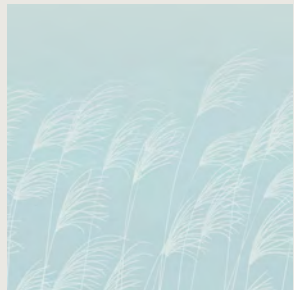
MISCANTHUS

113230



MISCANTHUS

113231



MISCANTHUS

113232



MOJIs

113193



MOJIs

113194



MOKUMEs

113222



MOKUMEs

113223



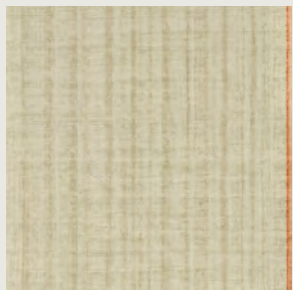
MOKUMEs

113224



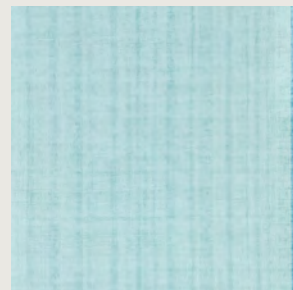
MOKUMEs

113225



PAPYRUS

113195



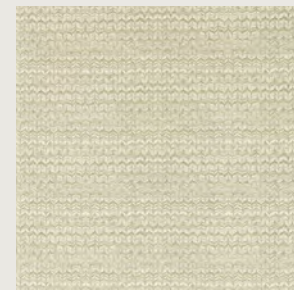
PAPYRUS

113196



PAPYRUS

113197



SOBUKUs

113219



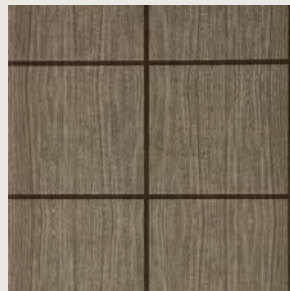
SOBUKUs

113220

WALLPAPER INDEX



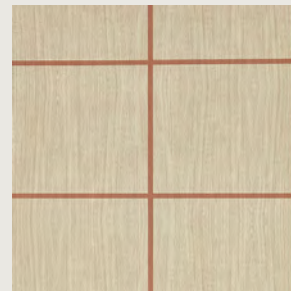
SOBOKU 113221



WOOD BLOCKS 113198



WOOD BLOCKS 113199



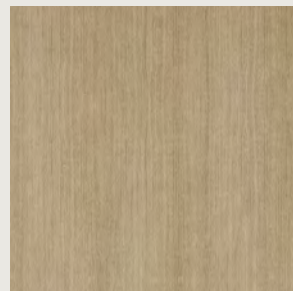
WOOD BLOCKS 113200



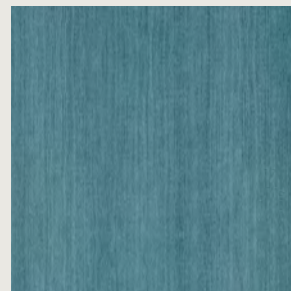
WOOD BLOCKS 113201



WOOD BLOCKS 113202



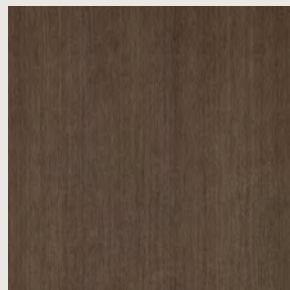
WOOD VENEER 113207



WOOD VENEER 113208



WOOD VENEER 113209



WOOD VENEER 113210

CONTACT INFORMATION

LONDON SHOWROOM - NEW

Unit 23G, Ground Floor, Central Dome, Chelsea Harbour Design Centre, London, SW10 0XE

T: +44 (0)203 903 3700

E: showroom@sandersondesigngroup.com

NEW YORK SHOWROOM

D&D Building, 979 Third Avenue, Suite 905, New York, NY 10022

T: +1 212 319 7220

E: sales-ny@sandersondesigngroup.com

CHICAGO SHOWROOM

222 W Merchandise Mart Plaza, Suite 6-117A, Chicago, IL, 60654

T: +1 312 929 2058

E: sales-chicago@sandersondesigngroup.com

GERMANY SHOWROOM

Kronenstrasse 4, 76133 Karlsruhe

T: +49 721 981 985 60

E: verkauf@sandersondesigngroup.com

NETHERLANDS SHOWROOM

ETC Licht & Interieur, Randweg 20, 4104 AC Culemborg

T: +31 65349 3696

E: international@sandersondesigngroup.com

HARLEQUIN.SANDERSONDESIGNGROUP.COM

[@HARLEQUINFW](https://www.instagram.com/HARLEQUINFW)