



HARLEQUIN

x

HenryHolland

DIGITAL DESIGN BOOK

HARLEQUIN X HenryHolland

COCOONING INTERIORS WITH ORGANIC FORMS, ARTISANAL INFLUENCES AND EARTHY COLOUR COMBINATIONS, HARLEQUIN X HENRY HOLLAND INTRODUCES A TEXTURAL COLLECTION OF FABRIC AND WALLPAPER FOR AW24.

Combining Harlequin's obsession with colour with designer and ceramicist Henry Holland's signature style in clay work, an effortlessly curated fabric and wallpaper collection is revealed, blending ceramic craft with technical skill and mastery of the colour palette.

Henry's passion for Nerikomi, a Japanese pottery technique, was an artistic reference point for this collection. Hand-picked designs from our archive are combined with this style, resulting in a textural collection that saturates interiors with tonal, earthy colours and interpretive patterns.

"From the initial concept stage to creating the full collection, the collaboration process was so much fun. Working with the team at Harlequin to explore the capabilities of mills, select fabrication bases, and work up a palette, we've created customised signature patterns that sit within a textural story. Seeing my work reinterpreted from a different perspective has been thrilling." Henry Holland.

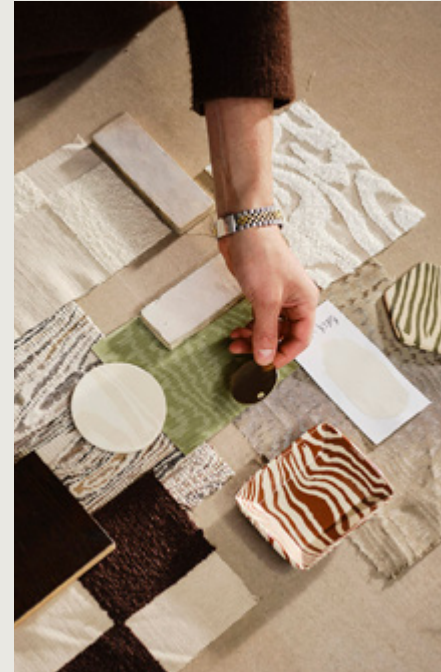
This collaboration is a meeting of creative minds who share the love of building texture through layering natural, organic forms. Our design team worked closely with Henry to translate these ceramic forms into fabric and wallpaper designs with perpetual appeal.

Each shade is thoughtful and organic, with a Harlequin twist. Hints of Terracotta, splashes of Atlantic, and copious amounts of Chocolate and Matcha ground the collection and elevate interiors. From fabrics inspired by archival prints to deeply sumptuous embroideries and weaves rich in texture, interiors will be layered in irresistibly tactile designs that sit at the intersection of our design worlds.

Wallpapers have been designed through a mix of techniques and processes. An experimental approach has culminated in a collection of versatile textures mirroring how Henry works in his studio. From the momentous Marble panel to the ombre chevron of Southborough, schemes are dressed in interpretive style.

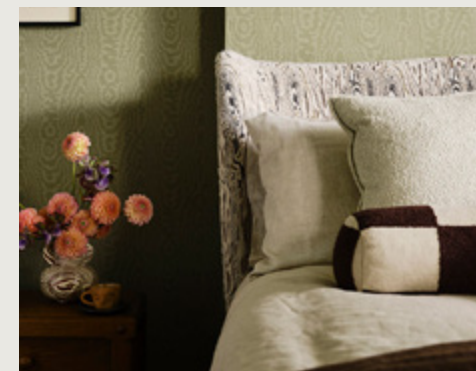
Translating Henry's work in ways not seen before, shape interiors in organic layers of design with Harlequin x Henry Holland.





"I love Elsworthy as a twist on a classic fabric and a way of adding texture to something that still acts as a grounding plain within any room."

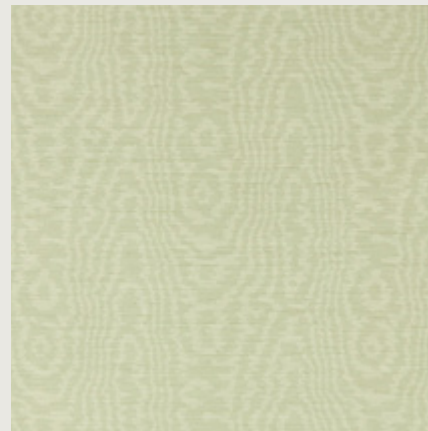
Henry Holland



ELSWORTHY MOIRÉ

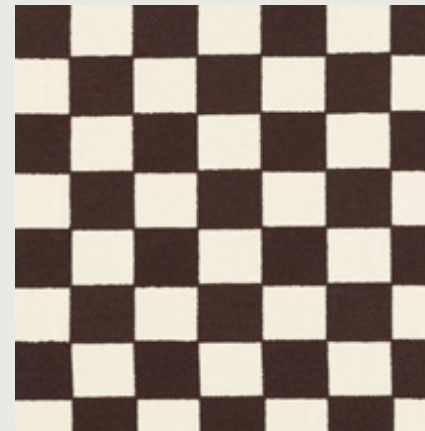


ELSWORTHY
113178



A moiré-style wallpaper with a silk emboss gives the feeling of fabric on the wall.

BLENETS CHECK
134182

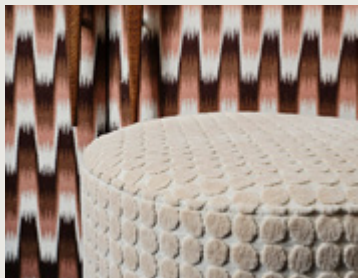


This large-scale checkerboard design is bold and dramatic in texture and scale.

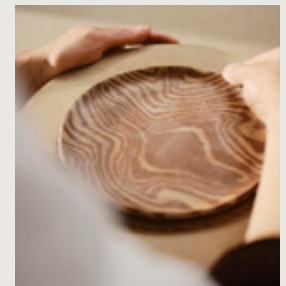
MARBLE TAPESTRY
134220



Marble Tapestry is an impressive design by nature and craft.



The colours of Southborough intensify throughout the ombre, giving new meaning to this stepped chevron design.



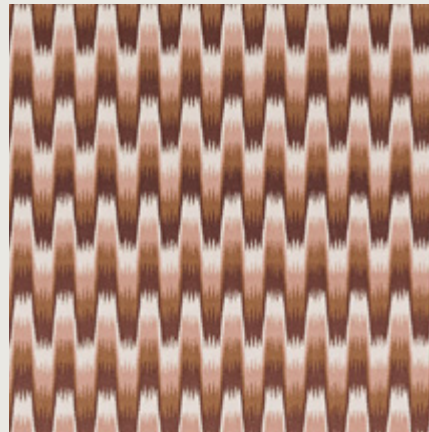
SOUTHBOROUGH

EMBROIDERY



SOUTHBOROUGH

134179



An embroidered chevron ombré that harnesses the tones found in Henry's clay work.

ELSWORTHY

134242



This moiré-style design was drawn from the archive and recreated as a woven jacquard.

LOOPY SPOT

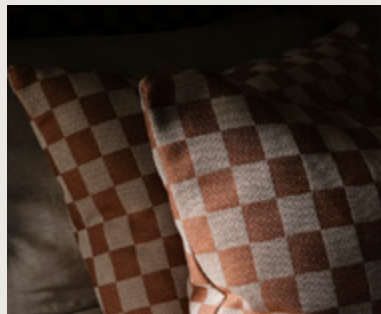
134204



This cut velvet design is taken from a ceramic plate, which plays with the irregularity of the conjoined spot.



A textural collection that saturates interiors with tonal, earthy colours and interpretive patterns.



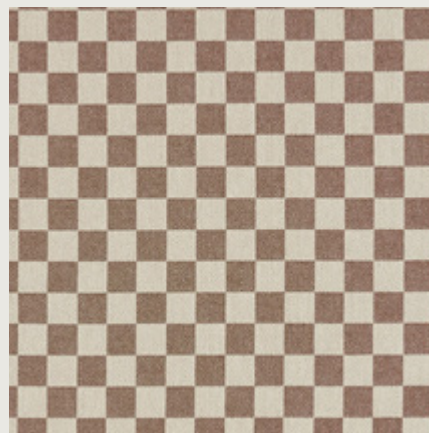
BLENETS

CHECK



BLENETS CHECK MINI

134227



Blenets Check Mini is a weave with design intention and grounding coordinate.

EDENFIELD

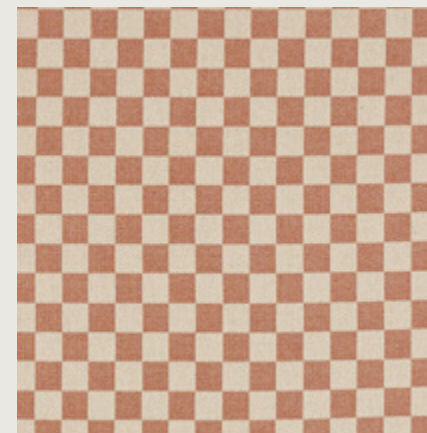
113172



A woodgrain effect has been painted onto silk paper for a natural bleed, creating rivulets of colour on this mattified vinyl.

BLENETS CHECK MINI

134226

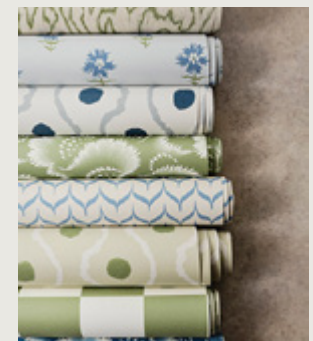


Checkerboard designs don't come more perfectly formed than this.



*"Seeing my work reinterpreted
from a different perspective
has been thrilling."*

Henry Holland.



EDENFIELD

WOODGRAIN



EDENFIELD

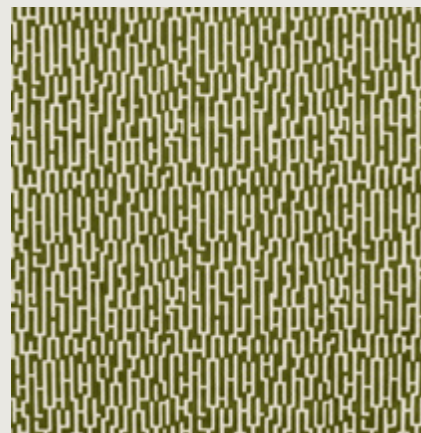
113174



Originally painted in the studio, the silk paper used allows the colour to naturally seep throughout the design.

GREAT HEY

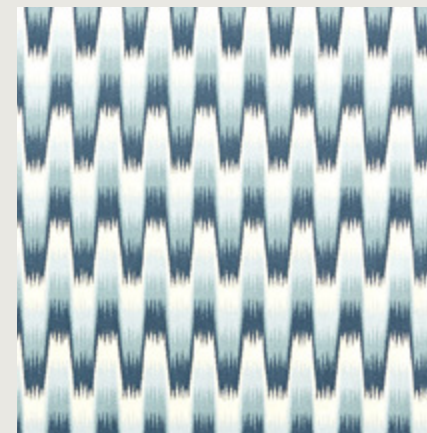
134231



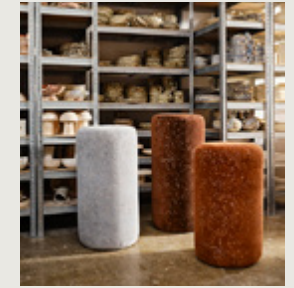
A ladder design, this jacquard cotton velvet smartly places Henry's signature 'h' in formation.

SOUTHBOROUGH

134181



Southborough cocoons interiors in deepening shades of Pacific.



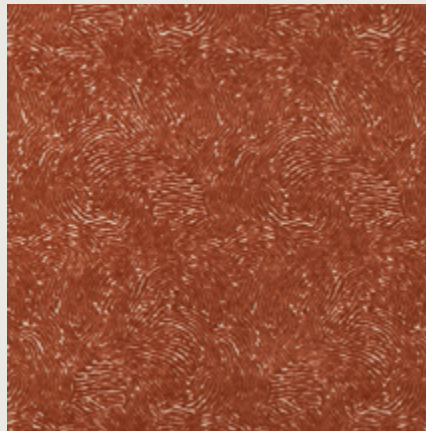
Henry's passion for Nerikomi, a Japanese pottery technique, was an artistic reference point for this collection.



BONSEKI WEAVE



BONSEKI
I34214



An aerial view of a landscape, Bonseki plays with the movement of the natural world.

POT SHOP
I34203



Potshop is an all-over crewel embroidery, referencing Henry's signature ceramic shapes.

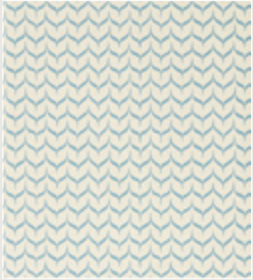
LUDAIX
I21256



A Japanese-style silhouette, this featured floral has a ruffled Ikat brush edge.

WALLPAPER

INDEX



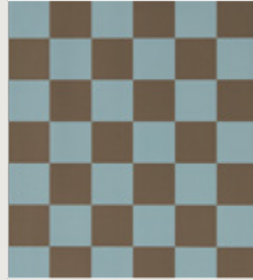
ADDERSTONE 113165



ADDERSTONE 113166



ADDERSTONE 113167



BLENETS CHECK 113168



BLENETS CHECK 113169



BLENETS CHECK 113170



BLENETS CHECK 113171



CONNOR 113157



CONNOR 113158



CONNOR 113159



CONNOR 113160



EDENFIELD 113172



EDENFIELD 113173



EDENFIELD 113174



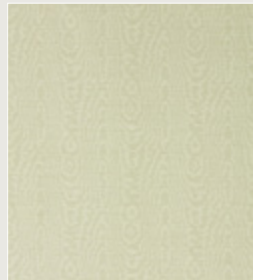
EDENFIELD 113175



EDENFIELD 113176



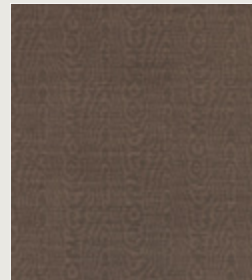
ELSWORTHY 113177



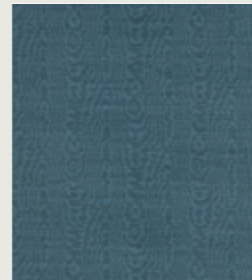
ELSWORTHY 113178



ELSWORTHY 113179



ELSWORTHY 113180



ELSWORTHY 113181



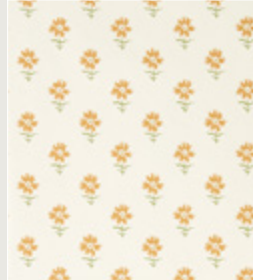
ELSWORTHY 113182



ELSWORTHY 113183



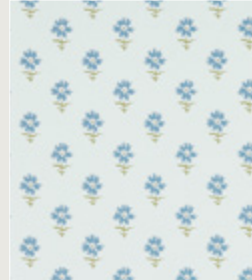
ELSWORTHY 113184



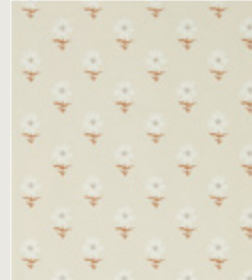
FELLCROFT 113161



FELLCROFT 113162



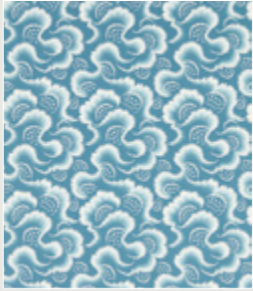
FELLCROFT 113163



FELLCROFT 113164

WALLPAPER

INDEX



LUDAIX

113149



LUDAIX

113150



LUDAIX

113151



LUDAIX

113152



MARBLE

113185



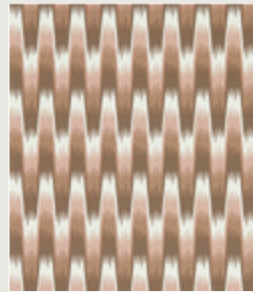
MARBLE

113186



SOUTHBOROUGH

113153



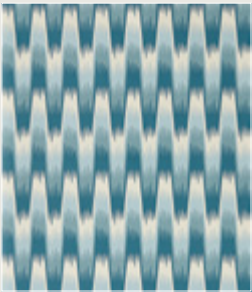
SOUTHBOROUGH

113154



SOUTHBOROUGH

113155



SOUTHBOROUGH

113156



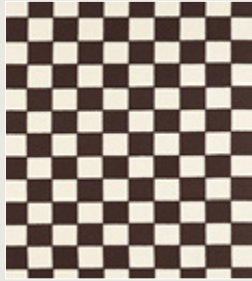
FABRIC INDEX



BISQUE 134193



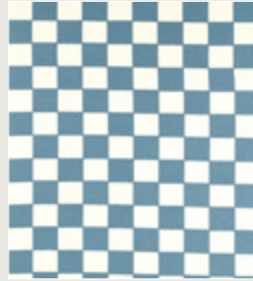
BISQUE 134194



BLENETS CHECK 134182



BLENETS CHECK 134183



BLENETS CHECK 134184



BLENETS CHECK 134185



BLENETS CHECK 134186



BLENETS SHEER 134191



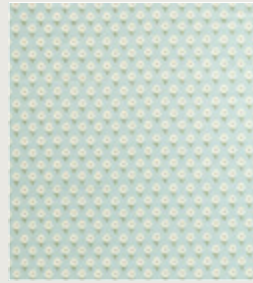
BLENETS SHEER 134192



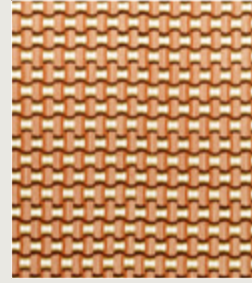
FELLCROFT 121259



FELLCROFT 121260



FELLCROFT 121261



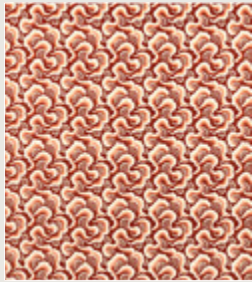
IKIGAI 134195



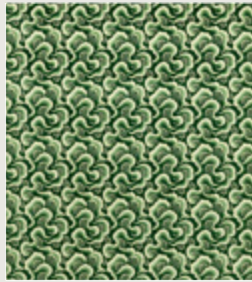
IKIGAI 134196



IKIGAI 134197



LUDAIX VELVET 121256



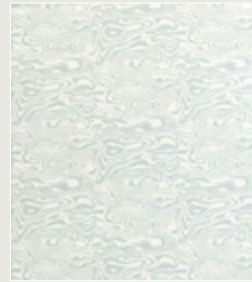
LUDAIX VELVET 121257



LUDAIX VELVET 121258



MARBLE 121265



MARBLE 121266



MARBLE WAVE 134187



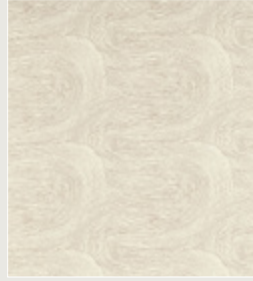
MARBLE WAVE 134188



MARBLE WAVE 134189



MARBLE WAVE 134190



NERIKOMI 134198



NERIKOMI 134199



NERIKOMI 134200



NERIKOMI 134201

FABRIC

INDEX



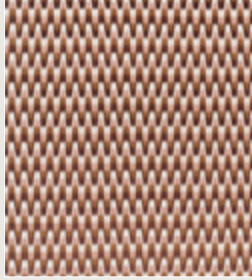
POT SHOP

134202



POT SHOP

134203



SOUTHBOROUGH

134179



SOUTHBOROUGH

134180



SOUTHBOROUGH

134181



WASHI

121262



WASHI

121263



WASHI

121264



WEAVES INDEX



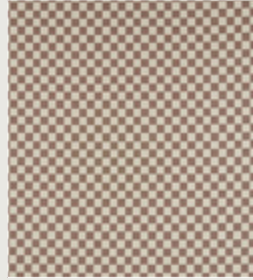
BLENETS CHECK MINI 134224



BLENETS CHECK MINI 134225



BLENETS CHECK MINI 134226



BLENETS CHECK MINI 134227



BONSEKI 134211



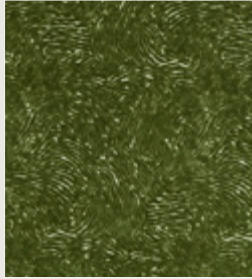
BONSEKI 134212



BONSEKI 134213



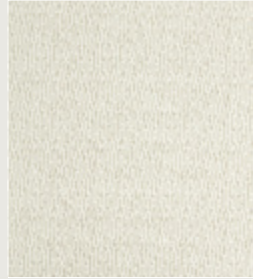
BONSEKI 134214



BONSEKI 134215



GREAT HEY 134228



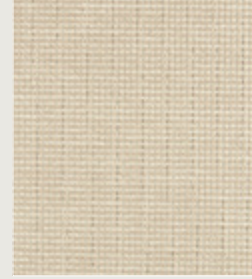
GREAT HEY 134229



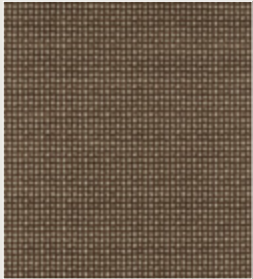
GREAT HEY 134230



GREAT HEY 134231



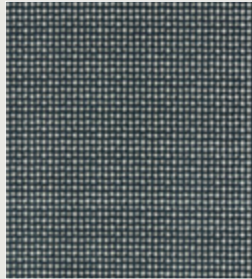
LOOPY SPOT 134203



LOOPY SPOT 134205



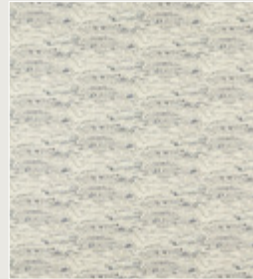
LOOPY SPOT 134206



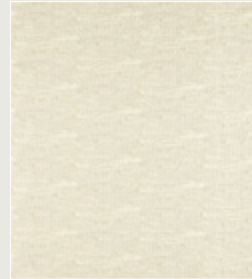
LOOPY SPOT 134207



MARBLE TAPESTRY 134220



MARBLE TAPESTRY 134221



MARBLE TAPESTRY 134222



MARBLE TAPESTRY 134223



RIDLEY 134208



RIDLEY 134209



RIDLEY 134210

MOIRÉ INDEX



ELSWORTHY 134232



ELSWORTHY 134233



ELSWORTHY 134234



ELSWORTHY 134235



ELSWORTHY 134236



ELSWORTHY 134237



ELSWORTHY 134238



ELSWORTHY 134239



ELSWORTHY 134240



ELSWORTHY 134241



ELSWORTHY 134242



ELSWORTHY 134243



ELSWORTHY 134246



ELSWORTHY 134244



ELSWORTHY 134245



CONTACT PAGE

SANDERSON DESIGN GROUP HEAD OFFICE

Voysey House, Sandersons Lane London, W4 4DS

Tel: +44 (0) 203 457 5862

PRESS OFFICE

Email: press@sandersondesigngroup.com Tel: + 44 (0) 1895 221005

CONSUMER & TRADE ENQUIRIES

Email: enquiries@sandersondesigngroup.com

For further information:

harlequin.sandersondesigngroup.com

To find your nearest stockist: harlequin.sandersondesigngroup.com/find-a-retailer

LONDON SHOWROOM

Design Centre Chelsea Harbour, First Floor, South Dome, Lots Road, London, SW10 0XE Tel: + 44 203 903 3700

Email: showroom@sandersondesigngroup.com

NEW YORK SHOWROOM

D&D Building, 979 3rd Avenue, Suite 409 New York, NY 10022

Tel +1 212 319 7220 sales-ny@sandersondesigngroup.com

CHICAGO SHOWROOM

222 Merchandise Mart Place, Suite 6-117A Chicago, IL 60654

Tel +1 312 929 2058 sales-chicago@sandersondesigngroup.com

NETHERLANDS SHOWROOM

ETC Licht & Interieur, Randweg 20,

4104 AC Culemborg

Tel: +31 65349 3696

Email: international@sandersondesigngroup.com

GERMANY SHOWROOM

Kronenstrasse 4, 76133 Karlsruhe

Tel: +49 721 981 985 60

Email: verkauf@sandersondesigngroup.com

