



HARLEQUIN

SGRAFFITO II

DIGITAL DESIGN BOOK



THE TEXTURAL ICONS
IN A FRESH, TAILORED PALETTE

WEAVING A NEW STORY OF ICONIC FABRICS, SGRAFFITO II BRINGS NEW COLOUR TO SIGNATURE WOVEN FABRICS WITH NEW ADDITIONS FOR SS25.

Sgraffito II is the perfect coordinating collection of weaves to layer with designs across Harlequin's extensive fabric portfolio. Key designs meet exciting new weaves for textural additions and an expanded colour palette in this iconic collection.

Exploring textures for interiors, Sgraffito II hones woven techniques, from semi-plain weaves and abstract stripes to distinct herringbones, to deliver a textural book of icons in a fresh and tailored colour palette.

Buttermilk tones, paprika threads, and twists of blue characterise the colourways for a crisp take on classic weaves.

A new signature of Sgraffito, Aiko brings a cloud of bouclé to the mood board. This abstract bouclé is an evolution in the Harlequin range, adding a new layer and depth to the collection. Kirikai is a classic herringbone design in a cotton linen mix, simple yet effective in a fresh, go-to palette.

Sgraffito II presents the perfect weaves for new design schemes - versatile, contemporary and full of texture.

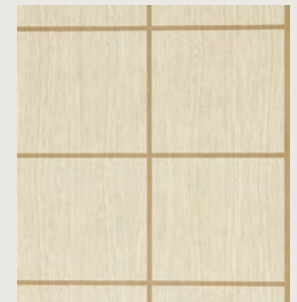


AIKO

Aiko is a bouclé mixed with a herringbone quality for a layered design that takes on the shaping of waves or an abstract take on a hillside—a fantastic follow-on from Islay.



AIKO 134565



WOOD BLOCKS 113199



EIZOU 121275

[CLICK ON THE PRODUCT IMAGES TO DISCOVER MORE](#)

AIKO COLOURWAYS



134562



134563



134564



134565

CLICK ON THE PRODUCT IMAGES TO DISCOVER MORE

AIKO TECHNICAL

TYPE	Weave
COMPOSITION	31% Cotton, 21% Viscose, 17% Acrylic, 16% Wool, 9% Linen, 6% Polyester
WIDTH	149cm
REPEAT	29cm
PATTERN MATCH	Straight
DOMESTIC USAGE	General Upholstery, Curtains, Blinds, Cushions
CONTRACT USAGE	Curtains, Blinds, Cushions
MARTINDALE	25,000



CESTINO

A contemporary tweed fabric design, Cestino's wool and cotton blend has a raised loop design for added texture and is perfect for upholstery and curtains.



CESTINO 134556



HARUKA 134584



AIKO 134562

[CLICK ON THE PRODUCT IMAGES TO DISCOVER MORE](#)

CESTINO COLOURWAYS



131874



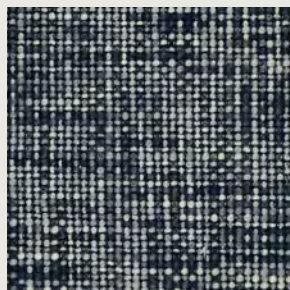
131875



131876



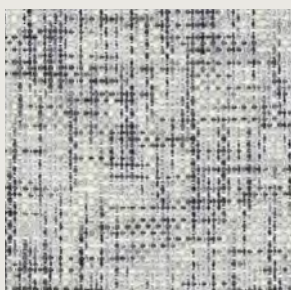
131878



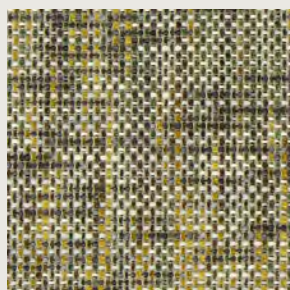
131879



131885



134556



134557



134558

CLICK ON THE PRODUCT IMAGES TO DISCOVER MORE

CESTINO TECHNICAL

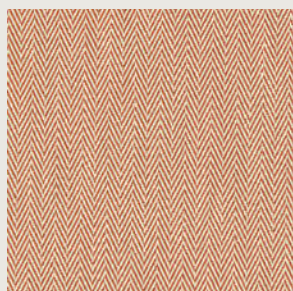
TYPE	Weave
COMPOSITION	60% Wool, 37% Cotton, 3% Acrylic
WIDTH	138cm
REPEAT	0cm
PATTERN MATCH	Random
DOMESTIC USAGE	General Upholstery, Curtains, Cushions
CONTRACT USAGE	Upholstery, Cushions
MARTINDALE	35,000



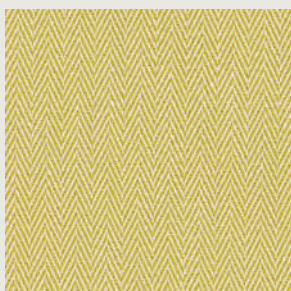
KIRIKAI

A herringbone design made from a cotton linen mix, Kirikai is a simple and effective fabric for interiors.

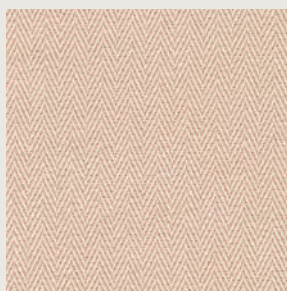
KIRIKAI COLOURWAYS



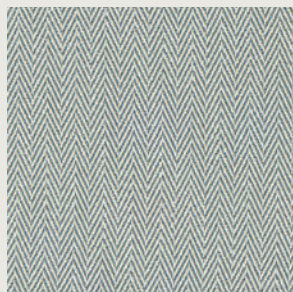
134566



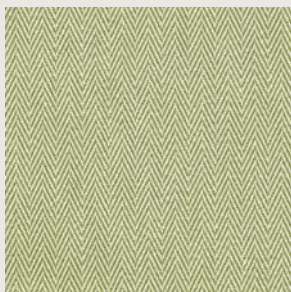
134567



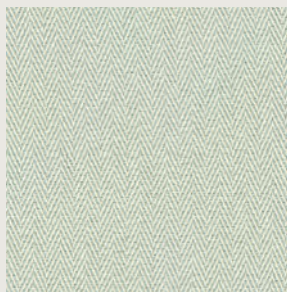
134568



134569



134570



134571

CLICK ON THE PRODUCT IMAGES TO DISCOVER MORE

KIRIKAI TECHNICAL

TYPE	Weave
COMPOSITION	93% Cotton, 7% Linen
WIDTH	140cm
REPEAT	2cm
PATTERN MATCH	Straight
DOMESTIC USAGE	General Upholstery, Curtains, Blinds, Cushions
CONTRACT USAGE	Curtains, Blinds, Cushions
MARTINDALE	35,000

SPECKLE

Speckle is a versatile semi-plain woven fabric design available in striking colour combinations. It is suitable for drapes and upholstery.

SPECKLE COLOURWAYS



131863



131868



131872



131873



134554



134614

CLICK ON THE PRODUCT IMAGES TO DISCOVER MORE

SPECKLE TECHNICAL

TYPE	Weave
COMPOSITION	80% Cotton, 20% Viscose
WIDTH	138cm
REPEAT	0cm
PATTERN MATCH	Random
DOMESTIC USAGE	General Upholstery, Curtains, Cushions
CONTRACT USAGE	Upholstery, Curtains, Blinds, Cushions
MARTINDALE	50,000

STRATO

An eye-catching cotton-blend fabric, Strato resembles freely applied brushstrokes, forming an abstract stripe. Suitable for curtains and upholstery.

STRATO COLOURWAYS



131857



131858



131859



131861



131862



134553

CLICK ON THE PRODUCT IMAGES TO DISCOVER MORE

STRATO TECHNICAL

TYPE	Weave
COMPOSITION	55% Cotton, 30% Viscose, 5% Polyester, 5% Linen, 5% Acrylic
WIDTH	138cm
REPEAT	0cm
PATTERN MATCH	Random
DOMESTIC USAGE	General Upholstery, Curtains, Cushions
CONTRACT USAGE	Upholstery, Curtains, Blinds, Cushions
MARTINDALE	40,000

VITTO

Similar to a tweed, Vitto has a small-scale diamond chevron pattern. The yarn used in Vitto has been dyed in multiple colours before being woven, which is how the fabric's texture and depth come to the fore.

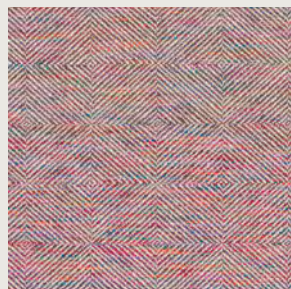
VITTO COLOURWAYS



131880



131881



131882



131883



131884



134559



134560



134561

[CLICK ON THE PRODUCT IMAGES TO DISCOVER MORE](#)

VITTO TECHNICAL

TYPE	Weave
COMPOSITION	60% Cotton, 27% Viscose, 7% Linen, 5% Acrylic, 1% Nylon
WIDTH	138cm
REPEAT	0cm
PATTERN MATCH	Straight
DOMESTIC USAGE	General Upholstery, Curtains, Cushions
CONTRACT USAGE	Upholstery, Curtains, Blinds, Cushions
MARTINDALE	50,000

FABRIC INDEX



AIKO 134562



AIKO 134563



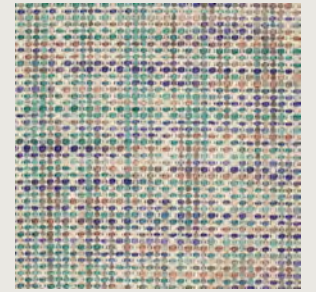
AIKO 134564



AIKO 134565



CESTINO 131874



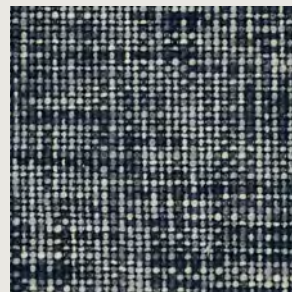
CESTINO 131875



CESTINO 131876



CESTINO 131878



CESTINO 131879



CESTINO 131885



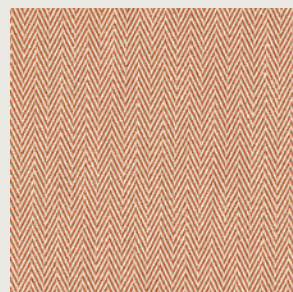
CESTINO 134556



CESTINO 134557



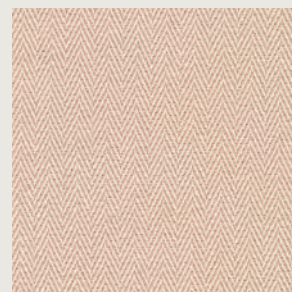
CESTINO 134558



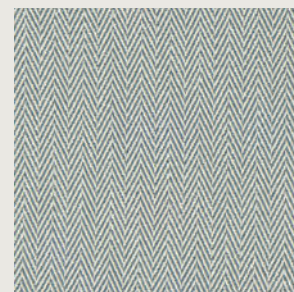
KIRIKAI 134566



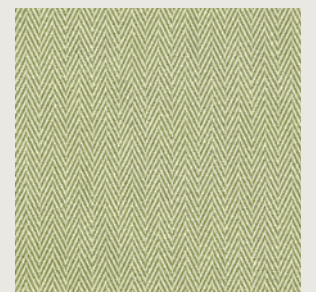
KIRIKAI 134567



KIRIKAI 134568



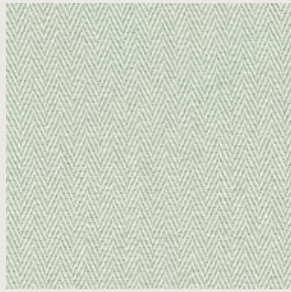
KIRIKAI 134569



KIRIKAI 134570

CLICK ON THE PRODUCT IMAGES TO DISCOVER MORE

FABRIC INDEX



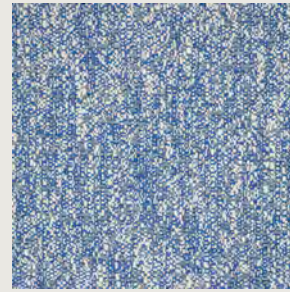
KIRIKAI 134571



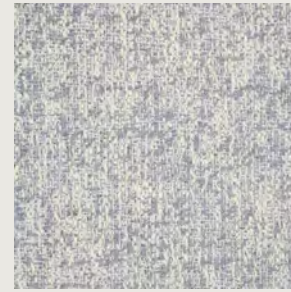
SPECKLE 131863



SPECKLE 131868



SPECKLE 131872



SPECKLE 131873



SPECKLE 134554



SPECKLE 134614



STRATO 131857



STRATO 131858



STRATO 131859



STRATO 131861



STRATO 131862



STRATO 134553



VITTO 131880



VITTO 131881



VITTO 131882



VITTO 131883



VITTO 131884

CLICK ON THE PRODUCT IMAGES TO DISCOVER MORE

FABRIC INDEX



VITTO

134559



VITTO

134560



VITTO

134561

CLICK ON THE PRODUCT IMAGES TO DISCOVER MORE

CONTACT INFORMATION

LONDON SHOWROOM - NEW

Unit 23G, Ground Floor, Central Dome, Chelsea Harbour Design Centre,
London, SW10 0XE

T: +44 (0)203 903 3700

E: showroom@sandersondesigngroup.com

NEW YORK SHOWROOM

D&D Building, 979 Third Avenue, Suite 905, New York, NY 10022

T: +1 212 319 7220

E: sales-ny@sandersondesigngroup.com

CHICAGO SHOWROOM

222 W Merchandise Mart Plaza, Suite 6-117A, Chicago, IL, 60654

T: +1 312 929 2058

E: sales-chicago@sandersondesigngroup.com

GERMANY SHOWROOM

Kronenstrasse 4, 76133 Karlsruhe

T: +49 721 981 985 60

E: verkauf@sandersondesigngroup.com

NETHERLANDS SHOWROOM

ETC Licht & Interieur, Randweg 20, 4104 AC Culemborg

T: +31 65349 3696

E: international@sandersondesigngroup.com

HARLEQUIN.SANDERSONDESIGNGROUP.COM

[@HARLEQUINFW](https://www.instagram.com/HARLEQUINFW)