

# HARLEQUIN

ARIO





**ARIO PLAINS**  
SUSTAINABLE & VERSATILE

## ARIO JOINS HARLEQUIN'S LIBRARY OF PLAINS FOR SS25.

Ario, a drapery fabric made of recycled fibres and cotton, is a versatile new addition to Harlequin's expanding library of plain fabrics.

A wonderfully useable cloth, Ario is available in both standard and wide width in an extraordinary range of colours. Joining the Harlequin Plains series, Ario underscores the brand's commitment to using sustainable fibres in collections.

With a fine slub texture and ease of movement, Ario has unique characteristics. Recycled polyester and cotton weave together to form an elegant fabric for design schemes where sustainability is a key consideration.

Joining a core range of plains, Ario is a designer's toolbox staple. Experience the breadth of Harlequin's colour palette in 38 expressive colours, available in standard and wide width; grounded neutrals, mineral tones, sweet shades of red and pink and fresh greens and blues come together in Ario, layering across the Harlequin portfolio for a fabric of lasting appeal and sustainable quality.

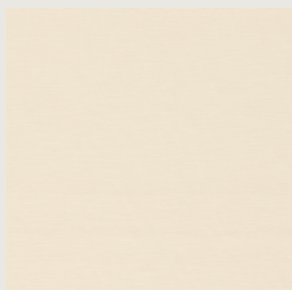


## ARIO

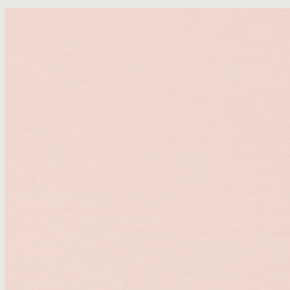
Ario is a drapery-quality fabric woven from recycled polyester and cotton, and each shade is available in both standard and wide-width to suit a range of interior applications.

### ARIO COLOURWAYS

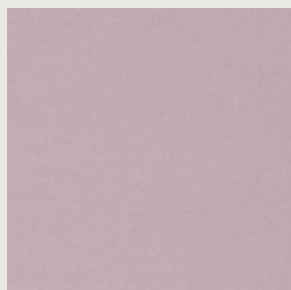
---



134423



134424



134425



134426



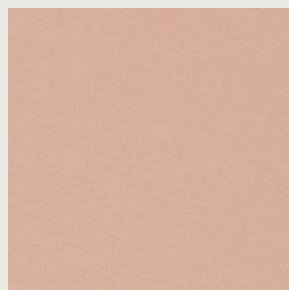
134427



134428



134429



134430

CLICK ON THE PRODUCT IMAGES TO DISCOVER MORE

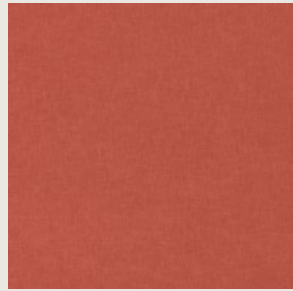
### ARIO TECHNICAL

---

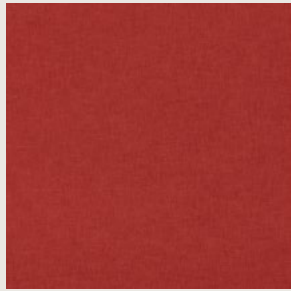
<b>TYPE</b>	Weave
<b>COMPOSITION</b>	69% Re-cycled Polyester, 31% Cotton
<b>STANDARD WIDTH</b>	153cm
<b>WIDE WIDTH</b>	308cm
<b>REPEAT</b>	0cm
<b>PATTERN MATCH</b>	Straight
<b>DOMESTIC USAGE</b>	Curtains, Blinds, Cushions
<b>CONTRACT USAGE</b>	Curtains, Blinds, Cushions
<b>MARTINDALE</b>	10,000

## ARIO COLOURWAYS

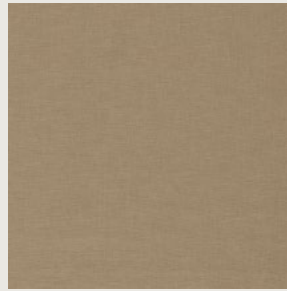
---



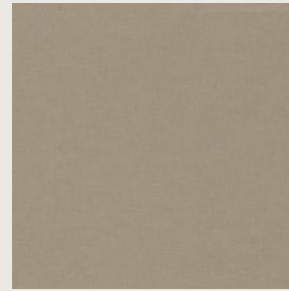
134431



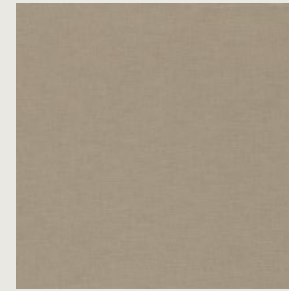
134432



134433



134434



134435



134436



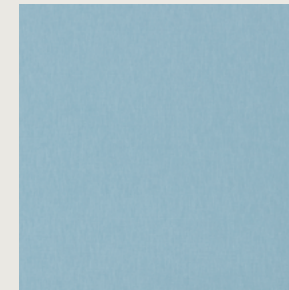
134437



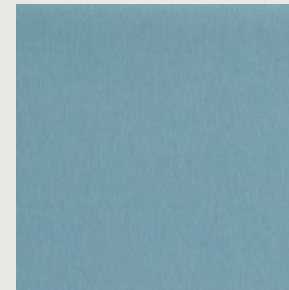
134438



134439



134440



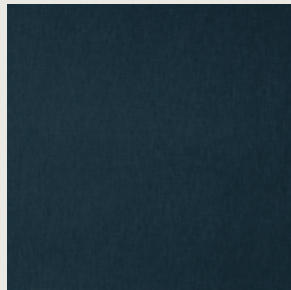
134441



134442



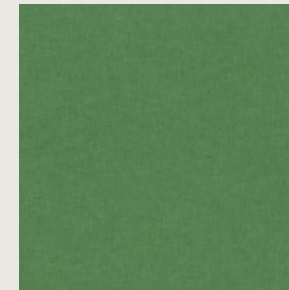
134443



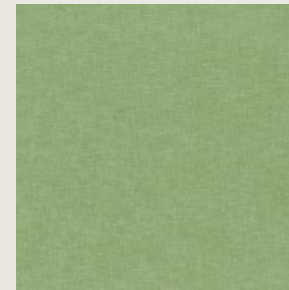
134444



134445



134446



134447

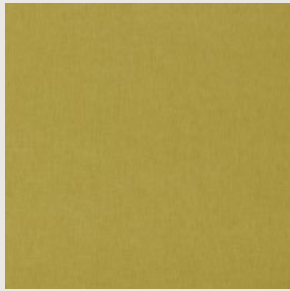


134448

CLICK ON THE PRODUCT IMAGES TO DISCOVER MORE

## ARIO COLOURWAYS

---



134449



134450



134451



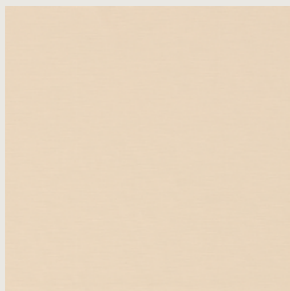
134452



134453



134454



134455



134456



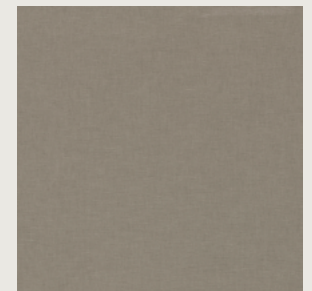
134457



134458



134459



134460

CLICK ON THE PRODUCT IMAGES TO DISCOVER MORE





## CONTACT INFORMATION

---

### HEAD OFFICE

Sanderson Design Group,  
Voysey House, Sandersons Lane, London W4 4DS

### LONDON SHOWROOM - NEW

Sanderson Design Group, Unit 23G, Ground Floor,  
Central Dome, Chelsea Harbour Design Centre, SW10 0XE, London

### NEW YORK SHOWROOM

D&D Building, 979 3rd Avenue, Suite 409 New York, NY 10022  
Tel +1 212 319 7220 sales-ny@sandersondesigngroup.com

### CHICAGO SHOWROOM

222 Merchandise Mart Place, Suite 6-117A Chicago, IL 60654  
Tel +1 312 929 2058 sales-chicago@sandersondesigngroup.com

### NETHERLANDS SHOWROOM

ETC Licht & Interieur, Randweg 20, 4104 AC Culemborg  
Tel: +31 65349 3696 Email: international@sandersondesigngroup.com

### GERMANY SHOWROOM

Kronenstrasse 4, 76133 Karlsruhe  
Tel: +49 721 981 985 60 Email: verkauf@sandersondesigngroup.com

@HARLEQUINFW HARLEQUIN.SANDERSONDESIGNGROUP.COM