

A top-down view of a fabric collection named 'Harlequin Plains'. The items are arranged on a light grey surface. On the left, there are several green fabric swatches: a large one with a raised, scale-like pattern, a smaller one with a fine woven texture, and another with a slightly different green hue. In the center, there are more green swatches, some with a woven texture and others with a smoother finish. To the right, there are tan and brown fabric swatches, including one with a chevron pattern and another with a scale-like pattern. Scattered around the fabrics are natural elements: a kiwi slice, a bunch of yellow string, a small green plant with tiny flowers, a yellow flower, and a round, shallow dish made of a textured material. The text 'HARLEQUIN PLAINS' is centered in white, serif font.

HARLEQUIN  
PLAINS

NEW FOR AW24



# HARLEQUIN

## PLAINS

**THE NEW PLAINS COLLECTIONS  
TRAVERSE THE SPECTRUM OF  
HARLEQUIN'S COLOUR PALETTE.**

Allegra and Mineral are two wonderfully versatile fabric collections. Together, they create a toolbox of plain fabrics for interior designers. Each design is uniquely dyed, offering a library of shades for layered and textured interior schemes.

Dual-purpose performance fabrics, ideal for upholstery and drapery, Allegra and Mineral are made from 100% cotton and a cotton/linen mix, and feature a Carbon Zero (C0), water and stain-resistant finish, which provides a high level of stain and water repellency.

"This series of plains offers designers an exciting colour line that moves through the spectrum of hues. It joins other performance fabrics, including Performance Velvets and Performance Bouclé, for a rich and varied selection of cloths woven from natural and recycled fibres. These plains elevate our statement designs across the Harlequin portfolio for enticingly layered design schemes."

Claire Greenfield, Lead Designer at Harlequin.

Harlequin Plains completes the design specification package. These versatile collections lift interiors through an inspirational palette of nuanced tones and shades.

@harlequinfw | [harlequin.sandersondesigngroup.com](https://www.harlequin.sandersondesigngroup.com)

**NEW FOR AW24**

## ALLEGRA

In 58 colours that range from bold and jewel-like to tonal and muted, Allegra is made from 100% cotton and piece-dyed for an intensity of colour. Dual-purpose, Allegra is suitable for drapery and upholstery and has a Carbon Zero (C0), water and stain-resistant finish applied.



## MINERAL

With 75 colours to choose from, Mineral revels in a multitude of tones. Made of cotton and linen, this fine fabric has been yarn-dyed for a cross-colour aesthetic and natural movement.

Pops of colour emerge from the Mineral palette, all true to Harlequin's ethos. Mineral is suitable for upholstery and drapery with a Carbon Zero (C0), water and stain-resistant finish applied.



# ALLEGRA PLAINS



LILAC 134345



HEATHER 134346



PEONY 134348



CHERRY 134353



SCARLET 134354



REEF 134355



CAMEO 134356



POSTIANO 134357



BURNT 134358



RUST 134359



SANDSTONE 134360



CRUMB 134361



INCENSE 134363



TRUFFLE 134364



OYSTER 134365



AVERY 134366



DOVE 134367



POWDER 134368



ATLANTIC 134369



BLUE BIRD 134370



HYDRANGEA 134371



SILK 134372



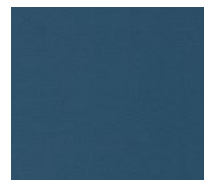
SKY 134373



HARBOUR 134374



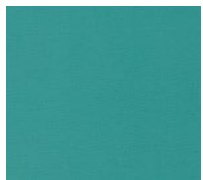
STORM 134377



DENIM 134378



CLOUD 134382



LAGOON 134383



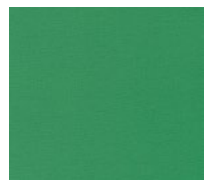
PRUSSIAN 134384



MALLARD 134385



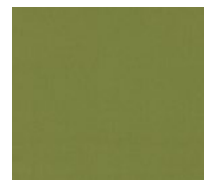
SEAFOAM 134388



JADE 134389



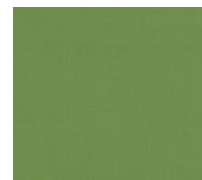
JUNIPER 134390



AVOCADO 134391



NETTLE 134392



ARTICHOKE 134394



GLACIER 134398



MIST 134399



FOSSIL 134400



WILLOW 134402



FAWN 134403



DAPHNE 134405



STRAW 134406

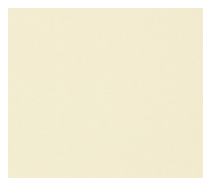


SAND 134407



PARSNIP 134408

## ALLEGRA PLAINS



PARCHMENT 134409



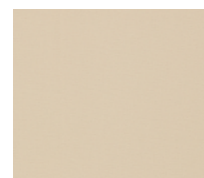
SESAME 134410



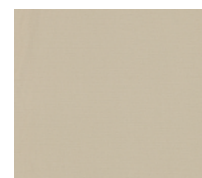
WHISPER 134411



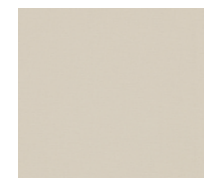
HAZE 134412



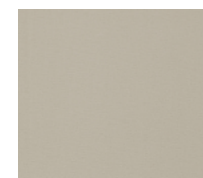
SHEEPSKIN 134413



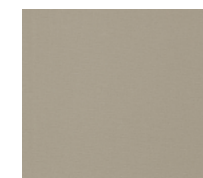
OAT 134414



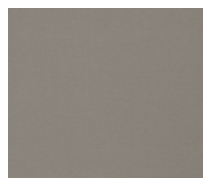
SHALLOW 134415



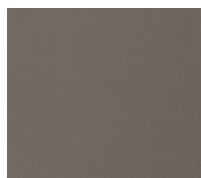
NICKEL 134417



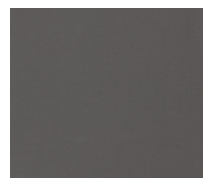
FOG 134418



HUSKY 134419



PIGEON 134420

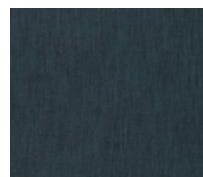


SLATE 134421



ECLIPSE 134422

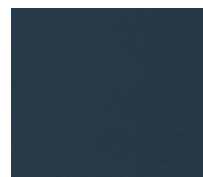
## MINERAL PLAINS



MIDNIGHT 134270



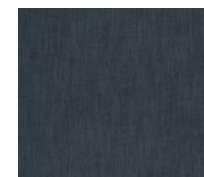
SKY 134271



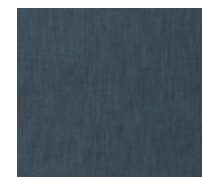
INDIGO 134272



INFINITY 134273



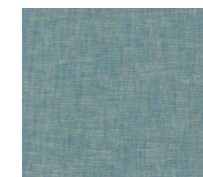
INK 134274



DENIM 134275



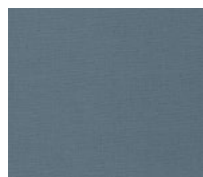
PACIFIC 134276



MAYA 134277



NORDIC 134278



CELESTIAL 134279



BEAU 134280



POWDER 134281



CLOUD 134282



BONDI 134283



LAGOON 134284



ATLANTIC 134286



NIMBUS 134388

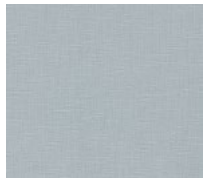


PISTACHIO 134289

# MINERAL PLAINS



FOG 134290



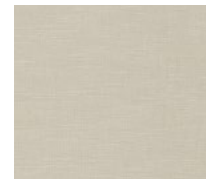
TRANQUIL 134291



MIST 134292



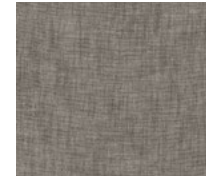
LAUREL 134293



DOVE 134294



SLATE 134295



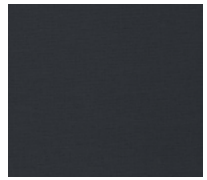
TEMPLETON 134296



BEAR 134297



WHALE 134298



ECLIPSE 134299



BLACK EARTH 134300



DALMATION 134301



MAGPIE 134302



GRAPHITE 134303



LIMEWASH 134304



LICHEN 134305



EUCALYPTUS 134306



JADE 134307



WILLOW 134308



MYRTLE 134309



EVERGREEN 134310



AVOCADO 134311



STRAW 134312



CAMEL 134313



CASHEW 134314



HONEYCOMBE 134315



ANNAPOLIS 134316



TAUPE 134317



PEALE 134318



CAROB 134319



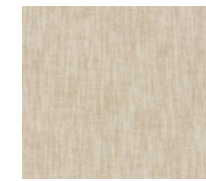
ANCHOR 134320



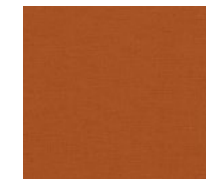
TAWNY 134321



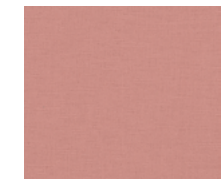
BASKET 134324



SUGAR 134325



RUSH 134327



DUSKY 134328



PARCHMENT 134329



PRISTINE 134330



SESAME 134331



ATRIUM 134332



AGATE 134333



OAT 134334



MACADAMIA 134335



RAFFIA 134336



SAND 134347

# MINERAL PLAINS



DUNE 134338



RICE 134339



CLAY 134340



JUTE 134341



CHAMPAGNE 134342



BEIGE 134343



ECHO 134344



SCARLET 134501



CHERRY 134502



SWEET PEA 134504



GINGER 134505



PEONY 134506





#### **LONDON SHOWROOM**

Design Centre Chelsea Harbour, First Floor,  
South Dome, Lots Road, London, SW10 0XE

Tel: + 44 203 903 3700

[showroom@sandersondesigngroup.com](mailto:showroom@sandersondesigngroup.com)

#### **PARIS SHOWROOM**

19 Rue Du Mail 75002 Paris, France

Tel: +44 (0)203 093 1840

#### **NEW YORK SHOWROOM**

D&D Building, 979 3rd Avenue,  
Suite 905, New York, NY 10022

Tel +1 212 319 7220

[sales-ny@sandersondesigngroup.com](mailto:sales-ny@sandersondesigngroup.com)

#### **CHICAGO SHOWROOM**

222 Merchandise Mart Place,  
Suite 6-117A, Chicago, IL 60654

Tel +1 312 929 2058

[sales-chicago@sandersondesigngroup.com](mailto:sales-chicago@sandersondesigngroup.com)

#### **NETHERLANDS SHOWROOM**

ETC Licht & Interieur, Randweg 20,  
4104 AC Culemborg

Tel: +31 65349 3696

[international@sandersondesigngroup.com](mailto:international@sandersondesigngroup.com)

#### **GERMANY SHOWROOM**

Kronenstrasse 4, 76133 Karlsruhe  
Tel: +49 721 981 985 60

[verkauf@sandersondesigngroup.com](mailto:verkauf@sandersondesigngroup.com)

[@harlequinfw](https://www.instagram.com/harlequinfw) | [harlequin.sandersondesigngroup.com](https://www.harlequin.sandersondesigngroup.com)