

# HARLEQUIN

AKARI WEAVES







**AKARI WEAVES**  
TEXTURE & TACTILITY

PRESENTING A GO-TO BOOK OF STATEMENT WOVEN FABRICS, AKARI WEAVES IS A SIGNATURE HARLEQUIN COLLECTION, TEMPTINGLY TEXTURED WITH VERSATILITY WOVEN INTO ITS NATURE FOR SS25.

Twelve colourways offer a contemporary palette of blues and greens with warmer hues, elevating the chevron design with natural shades of Oat, floods of Azul blue, and threads of Kelly green. For a little more spice, shades of Harisa and Positano add warmth and depth, while Truffle and Storm bring earth's wild nature to this collection. Akari Weaves presents a modern classic for interiors, highlighted by Harlequin's mastery of colour.

The timeless chevron stands bold on its own, a zig-zag signature giving texture to design schemes. Akari is a new take on this traditional design with a fuller weave that is robust and dense in its characteristics. This new woven fabric not only looks impactful but is incredibly durable.

"Akari Weaves is a wonderful weave collection to add to Harlequin's library of fabrics. Its quality and comforting nature, in colour and texture, make this a beautiful fabric to layer on schemes, mastering the art of everyday style – sure to become a signature weave from our studio." Flora Daly, Lead Designer at Harlequin.

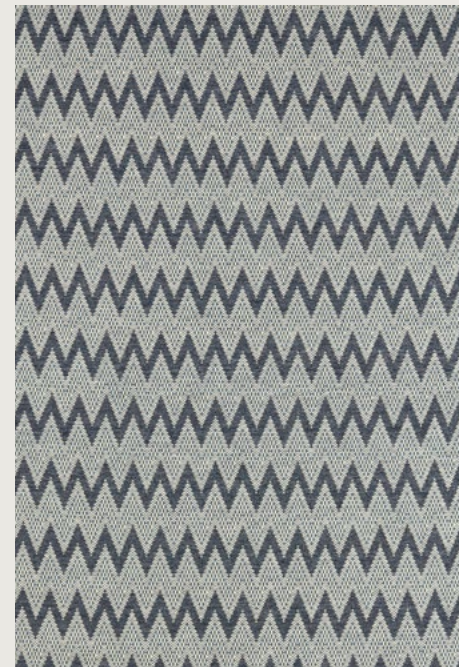
Akari layers organically in design schemes, cocooning interiors with warmth, texture, and tactility.





## AKARI

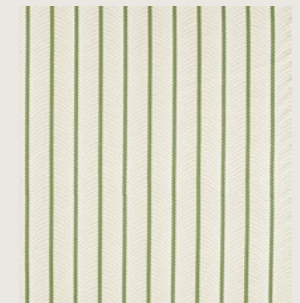
A traditional chevron made modern in its robust weave and colour palette. Twelve colours present tonal woven options with a high Martindale of 50,000. Textured and robust, Akari is the ultimate modern weave.



AKARI 134609



KIMONO 121269

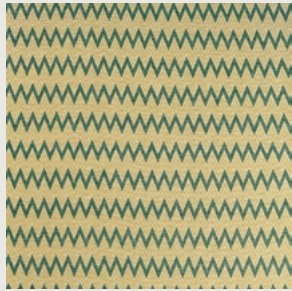


NATSU 134590

[CLICK ON THE PRODUCT IMAGES TO DISCOVER MORE](#)



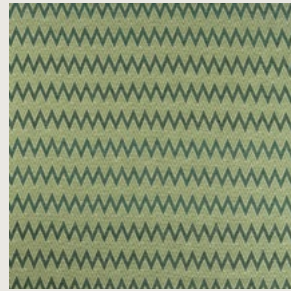
## AKARI WEAVES COLOURWAYS



134602



134603



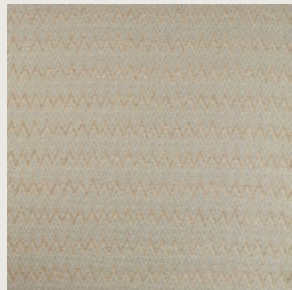
134604



134605



134606



134607



134608



134609



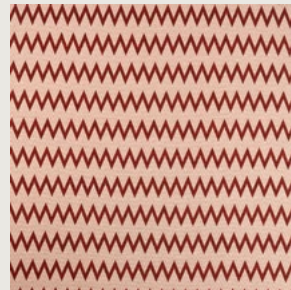
134610



134611



134612



134613

CLICK ON THE PRODUCT IMAGES TO DISCOVER MORE

## AKARI WEAVES TECHNICAL

<b>TYPE</b>	Weave
<b>COMPOSITION</b>	38% Polyester, 27% Nylon, 19% Cotton, 12% Re-cycled Polyester, 4% Linen
<b>WIDTH</b>	138.5cm
<b>REPEAT</b>	13cm
<b>PATTERN MATCH</b>	Straight
<b>DOMESTIC USAGE</b>	Light Upholstery, Cushions
<b>CONTRACT USAGE</b>	Upholstery, Cushions
<b>MARTINDALE</b>	30,000





## CONTACT INFORMATION

---

### LONDON SHOWROOM - NEW

Sanderson Design Group, Unit 23G, Ground Floor,  
Central Dome, Chelsea Harbour Design Centre, SW10 0XE, London

### NEW YORK SHOWROOM

D&D Building, 979 3rd Avenue, Suite 409 New York , NY 10022  
Tel +1 212 319 7220 sales-ny@sandersondesigngroup.com

### CHICAGO SHOWROOM

222 Merchandise Mart Place, Suite 6-117A Chicago, IL 60654  
Tel +1 312 929 2058 sales-chicago@sandersondesigngroup.com

### NETHERLANDS SHOWROOM

ETC Licht & Interieur, Randweg 20, 4104 AC Culemborg  
Tel: +31 65349 3696 Email: international@sandersondesigngroup.com

### GERMANY SHOWROOM

Kronenstrasse 4, 76133 Karlsruhe  
Tel: +49 721 981 985 60 Email: verkauf@sandersondesigngroup.com

@HARLEQUINFW HARLEQUIN.SANDERSONDESIGNGROUP.COM