

A photograph of a modern outdoor lounge chair with patterned cushions and a wooden coffee table with a potted plant. The scene is set in a bright, sunlit outdoor space with various green plants. The chair has a light-colored frame and is upholstered in a fabric with a complex, multi-colored geometric pattern. The cushions are also patterned, with some featuring bold horizontal stripes in earthy tones. The coffee table is made of light-colored wood and holds a small potted plant with thick, rounded leaves. The overall aesthetic is contemporary and bohemian.

HARLEQUIN

INDOOR OUTDOOR WEAVES II

DIGITAL DESIGN BOOK



PERFORMANCE WEAVES
PERFECT FOR INDOOR AND OUTDOOR



EXPANDING THE PERFORMANCE PORTFOLIO WITH EXPRESSIVE TEXTURES FOR OUTDOOR AND INDOOR SETTINGS, HARLEQUIN PRESENTS A NEW COLLECTION OF INDOOR OUTDOOR WEAVES FOR SS25.

Indoor Outdoor Weaves II reveals the next chapter of woven indoor outdoor fabrics. New scales and stripes layer across the Harlequin portfolio, pairing with prints and weaves in a coordinating colour story.

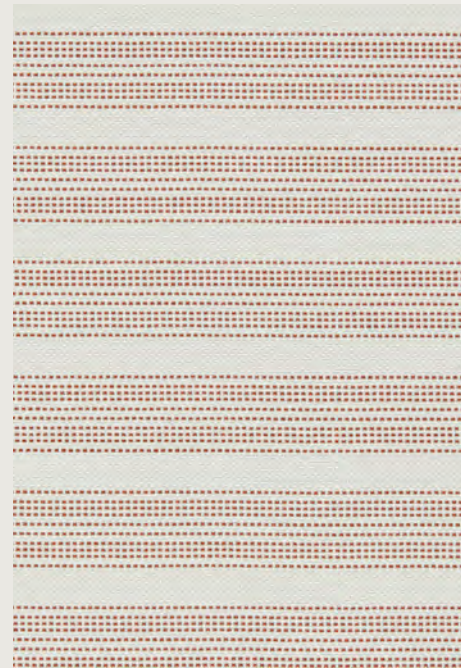
While neutral tones of chalk and taupe ground the collection, the colours woven in set Indoor-Outdoor Weaves II apart, enhancing each design for a dynamic and durable collection of fabrics. From this palette, stripes, ombres, check stripes, and tile-inspired designs combine for a detailed and beautifully woven book of indoor outdoor weaves.

Each weave is produced from textile waste and recycled fibres, specially developed to create sustainable furnishing fabrics. The weaves are treated with a specialist finish that includes water repellence and stain resistance, making them perfect for indoor and outdoor environments.



AYLA

A smart dashed stripe with sections of varying thicknesses, Ayla is a lightly detailed weave that lets the ground colour do the talking in Indigo & Chalk colourway.



AYLA 134515



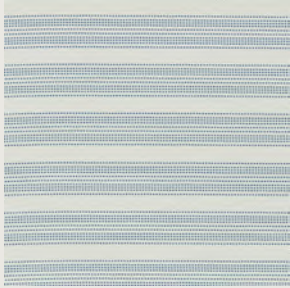
AMARIS 134534



ELIDI 134520

CLICK ON THE PRODUCT IMAGES TO DISCOVER MORE

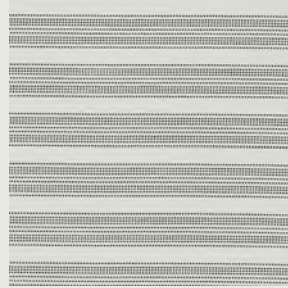
AYLA COLOURWAYS



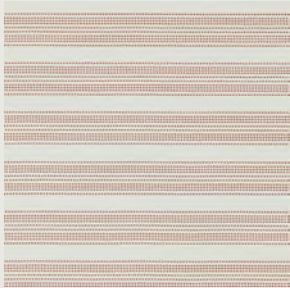
134512



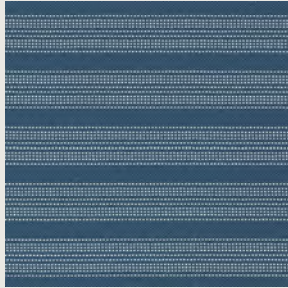
134513



134514



134515



134516

CLICK ON THE PRODUCT IMAGES TO DISCOVER MORE

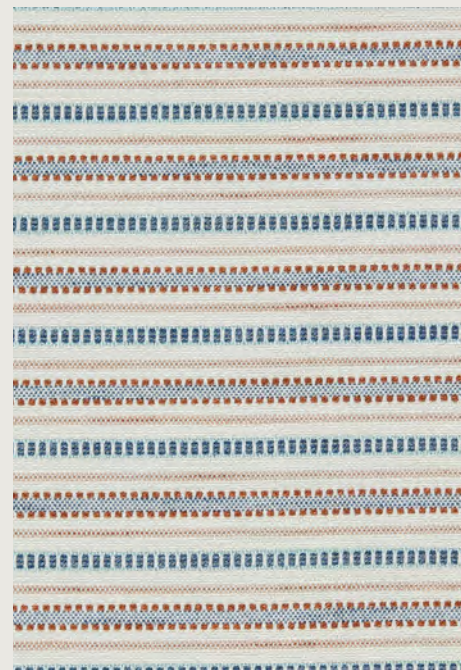
AYLA TECHNICAL

TYPE	Weave
COMPOSITION	100% Re-cycled Polypropylene
WIDTH	140cm
REPEAT	7.5cm
PATTERN MATCH	Straight
DOMESTIC USAGE	General Upholstery, Cushions
CONTRACT USAGE	Cushions
MARTINDALE	45,000

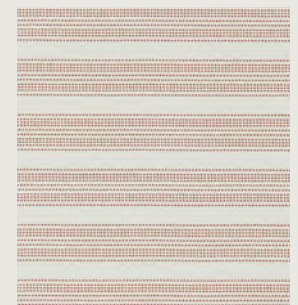


COVE

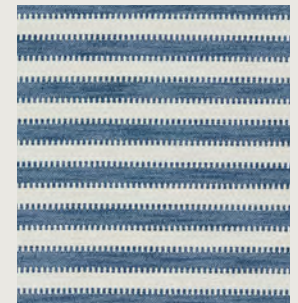
With an embroidered feel, Cove is a horizontal stripe that takes inspiration from styles across the collection. Beautiful colours are in the mix, making it an interesting and irresistible woven stripe.



COVE 134550



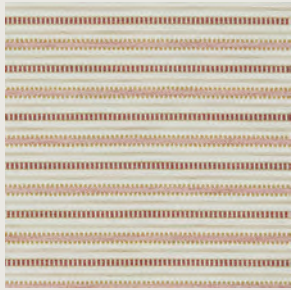
AYLA 134515



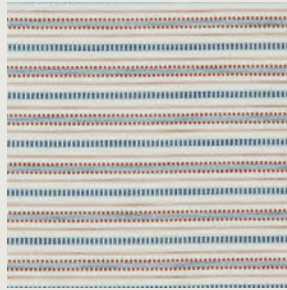
OCALA 134524

[CLICK ON THE PRODUCT IMAGES TO DISCOVER MORE](#)

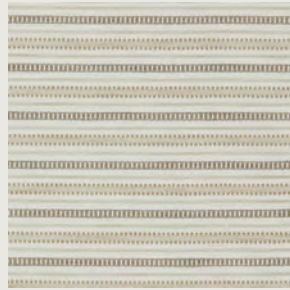
COVE COLOURWAYS



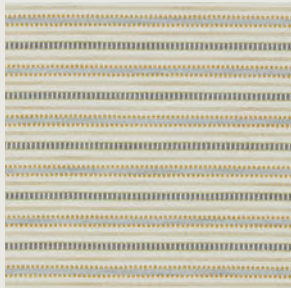
134549



134550



134551



134552

CLICK ON THE PRODUCT IMAGES TO DISCOVER MORE

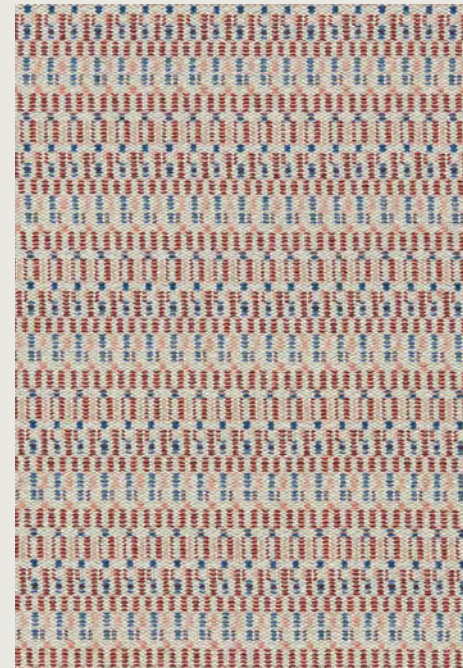
COVE TECHNICAL

TYPE	Weave
COMPOSITION	92% Re-cycled Polypropylene, 8% Polyester
WIDTH	141cm
REPEAT	7.5cm
PATTERN MATCH	Straight
DOMESTIC USAGE	General Upholstery, Cushions
CONTRACT USAGE	Cushions
MARTINDALE	60,000

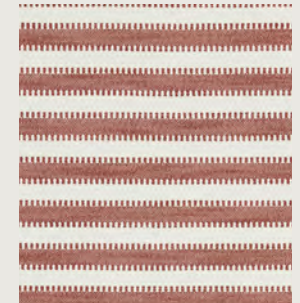


ELIDI

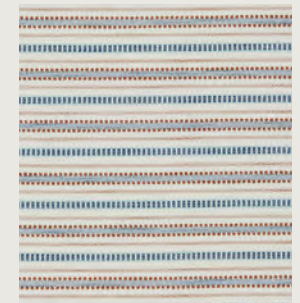
This organic check has a lovely colour mix in both colourways. The weave loosely resembles mark-making in art for an elevated look.



ELIDI 134520



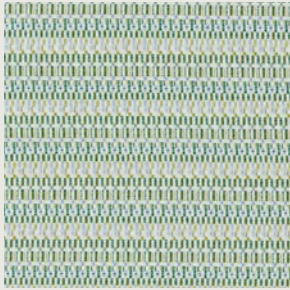
OCALA 134529



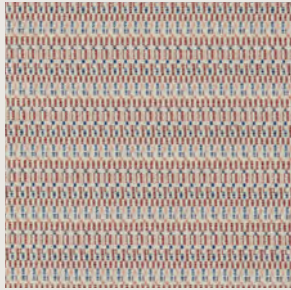
COVE 134550

[CLICK ON THE PRODUCT IMAGES TO DISCOVER MORE](#)

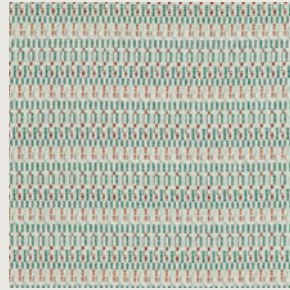
ELIDI COLOURWAYS



134519



134520



134521

CLICK ON THE PRODUCT IMAGES TO DISCOVER MORE

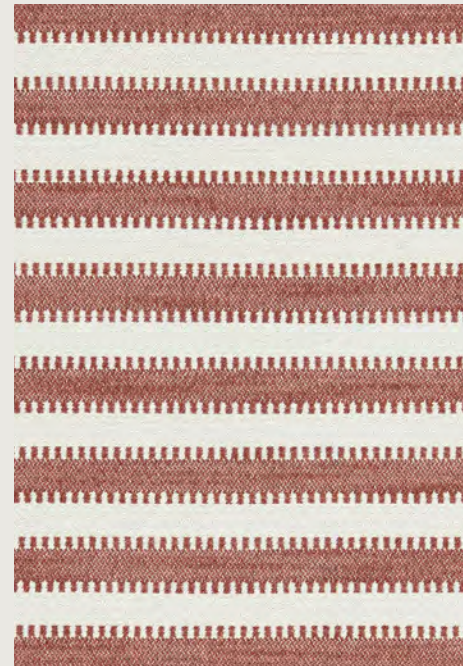
ELIDI TECHNICAL

TYPE	Weave
COMPOSITION	100% Re-cycled Polypropylene
WIDTH	138cm
REPEAT	9cm
PATTERN MATCH	Straight
DOMESTIC USAGE	General Upholstery, Cushions
CONTRACT USAGE	Cushions
MARTINDALE	20,000



OCALA

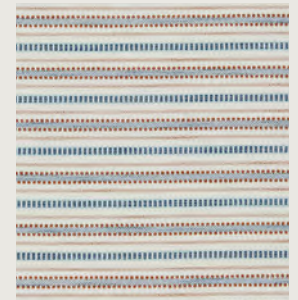
More detailed than your classic stripe, Ocala has a sawtooth effect and a lovely fleck in the colour for a softened look. Pairs well with Tamar.



OCALA 134529



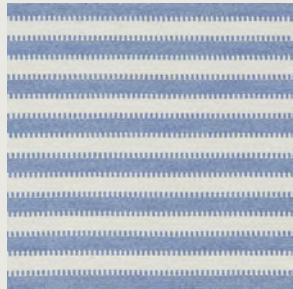
NALANI 134543



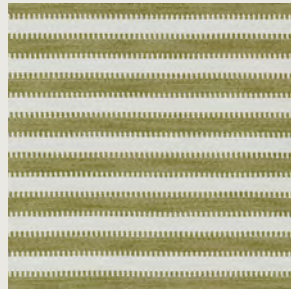
COVE 134550

CLICK ON THE PRODUCT IMAGES TO DISCOVER MORE

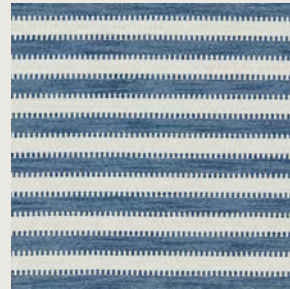
OCALA COLOURWAYS



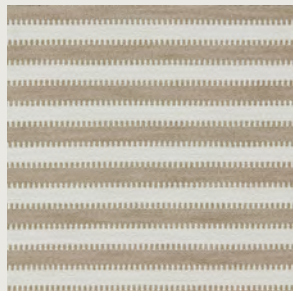
134522



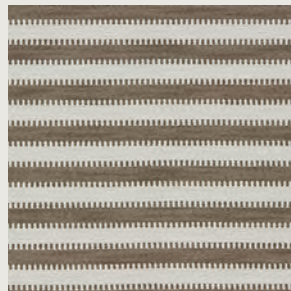
134523



134524



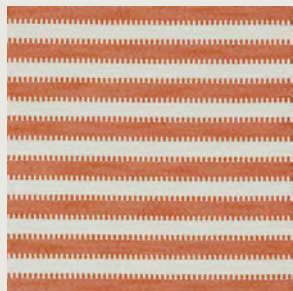
134525



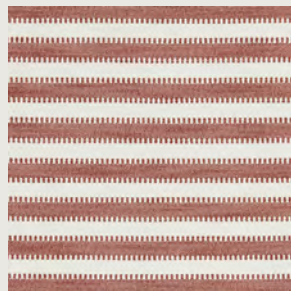
134526



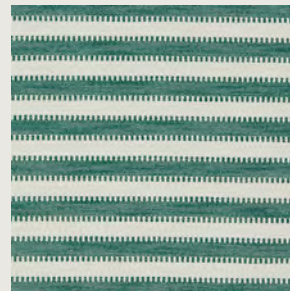
134527



134528



134529



134530

CLICK ON THE PRODUCT IMAGES TO DISCOVER MORE

OCALA TECHNICAL

TYPE	Weave
COMPOSITION	89% Re-cycled Polypropylene, 11% Polyester
WIDTH	141 cm
REPEAT	6cm
PATTERN MATCH	Straight
DOMESTIC USAGE	General Upholstery, Cushions
CONTRACT USAGE	Cushions
MARTINDALE	35,000



AMARIS

Inspired by our Strato stripe design, Amaris is an ombre stripe with an all-over pattern reflective of the landscape and sunset.

AMARIS COLOURWAYS



134533



134534



134535



134536



134537

CLICK ON THE PRODUCT IMAGES TO DISCOVER MORE

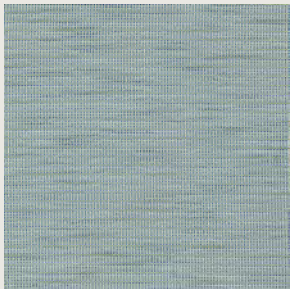
AMARIS TECHNICAL

TYPE	Weave
COMPOSITION	90% Re-cycled Polypropylene, 10% Polyester
WIDTH	139cm
REPEAT	41cm
PATTERN MATCH	Straight
DOMESTIC USAGE	General Upholstery, Cushions
CONTRACT USAGE	Cushions
MARTINDALE	45,000

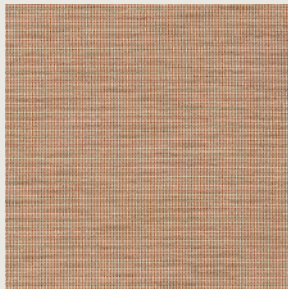
CASSIA

Cassia is a semi-plain with striking colour differences and has texture, colour and interest.

CASSIA COLOURWAYS



134547



134548

[CLICK ON THE PRODUCT IMAGES TO DISCOVER MORE](#)

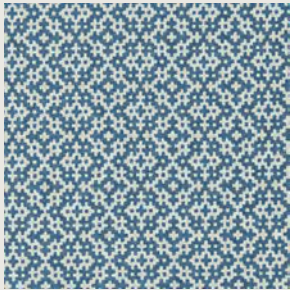
CASSIA TECHNICAL

TYPE	Weave
COMPOSITION	90% Re-cycled Polypropylene, 10% Polyester
WIDTH	142cm
REPEAT	13cm
PATTERN MATCH	Straight
DOMESTIC USAGE	General Upholstery Cushions
CONTRACT USAGE	Cushions
MARTINDALE	50,000

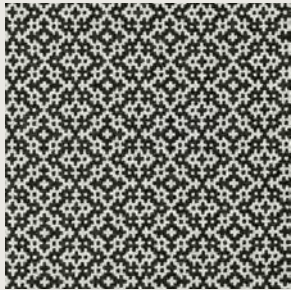
LIORA

Reminiscent of a tile pattern, Liora feels distinctly Mediterranean In two contemporary colourways. simplicity. A coordinating wallpaper is available.

LIORA COLOURWAYS



134531



134532

[CLICK ON THE PRODUCT IMAGES TO DISCOVER MORE](#)

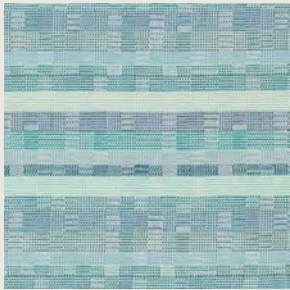
LIORA TECHNICAL

TYPE	Weave
COMPOSITION	100% Re-cycled Polypropylene
WIDTH	138cm
REPEAT	10.7cm
PATTERN MATCH	Straight
DOMESTIC USAGE	General Upholstery, Cushions
CONTRACT USAGE	Cushions
MARTINDALE	25,000

MIRA

Like a densely woven blanket, Mira creates interest in the colours used in the weave, where squares and stripes sit next to one another.

MIRA COLOURWAYS



134517



134518

[CLICK ON THE PRODUCT IMAGES TO DISCOVER MORE](#)

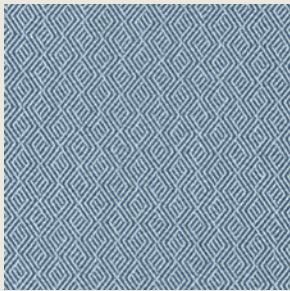
MIRA TECHNICAL

TYPE	Weave
COMPOSITION	100% Re-cycled Polypropylene
WIDTH	140cm
REPEAT	34cm
PATTERN MATCH	Straight
DOMESTIC USAGE	General Upholstery, Cushions
CONTRACT USAGE	Cushions
MARTINDALE	20,000

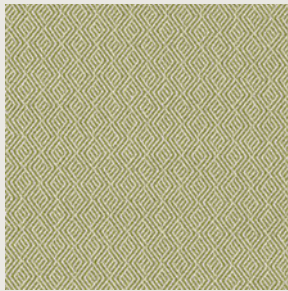
NALANI

Nalani is a small-scale, tile-inspired design that is a great coordinate in schemes.

NALANI COLOURWAYS



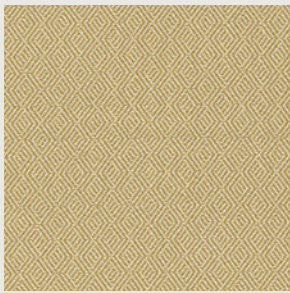
134538



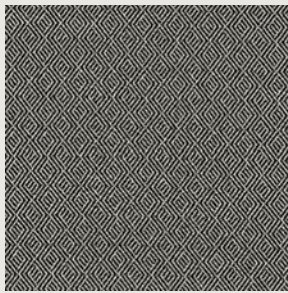
134539



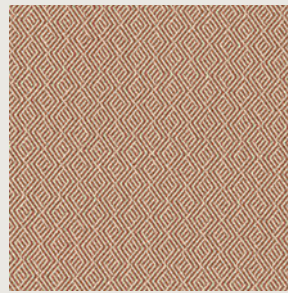
134540



134541



134542



134543

CLICK ON THE PRODUCT IMAGES TO DISCOVER MORE

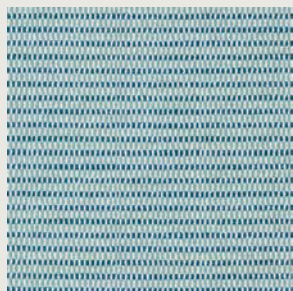
NALANI TECHNICAL

TYPE	Weave
COMPOSITION	100% Re-cycled Polypropylene
WIDTH	142cm
REPEAT	3.5cm
PATTERN MATCH	Straight
DOMESTIC USAGE	General Upholstery, Cushions
CONTRACT USAGE	Cushions
MARTINDALE	40,000

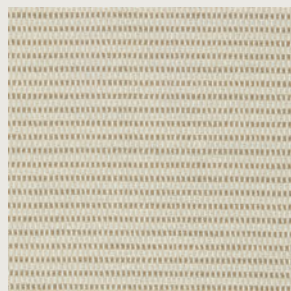
SOLEA

A small-scale check stripe, Solea has a lovely detail that contributes to the softness of each colourway.

SOLEA COLOURWAYS



134510



134511

[CLICK ON THE PRODUCT IMAGES TO DISCOVER MORE](#)

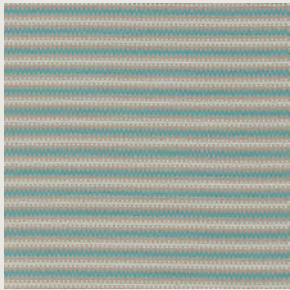
SOLEA TECHNICAL

TYPE	Weave
COMPOSITION	89% Re-cycled Polypropylene, 11% Polyester
WIDTH	140cm
REPEAT	2cm
PATTERN MATCH	Straight
DOMESTIC USAGE	General Upholstery, Cushions
CONTRACT USAGE	Cushions
MARTINDALE	50,000

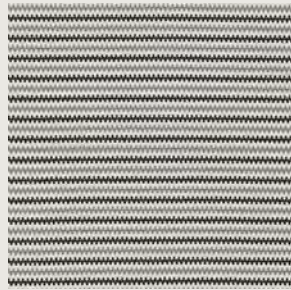
TAMAR

Tamar is a ladder stripe weave with a tri-colour palette - a design that sits well with Ocala Stripe.

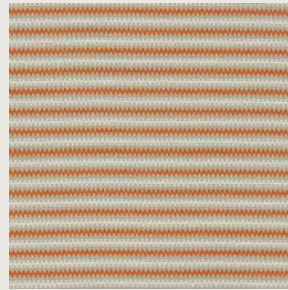
TAMAR COLOURWAYS



134544



134545



134546

[CLICK ON THE PRODUCT IMAGES TO DISCOVER MORE](#)

TAMAR TECHNICAL

TYPE	Weave
COMPOSITION	100% Re-cycled Polypropylene
WIDTH	138cm
REPEAT	3cm
PATTERN MATCH	Straight
DOMESTIC USAGE	General Upholstery, Cushions
CONTRACT USAGE	Cushions
MARTINDALE	25,000

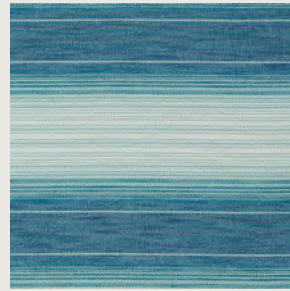
FABRIC INDEX



AMARIS 134533



AMARIS 134534



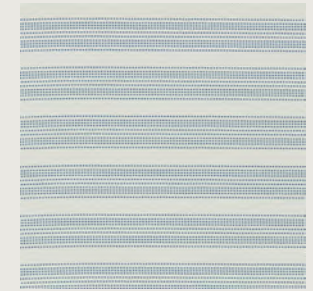
AMARIS 134535



AMARIS 134536



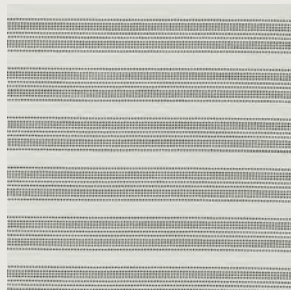
AMARIS 134537



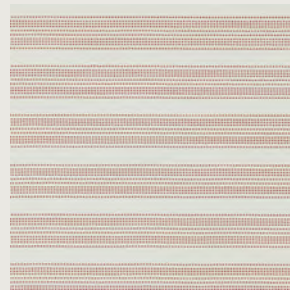
AYLA 134512



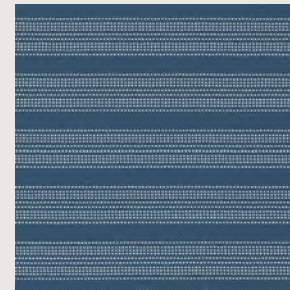
AYLA 134513



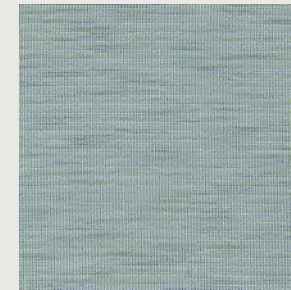
AYLA 134514



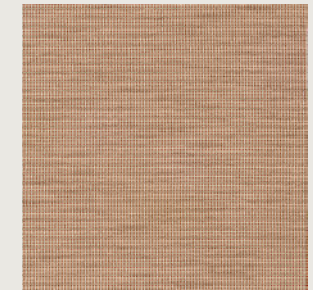
AYLA 134515



AYLA 134516



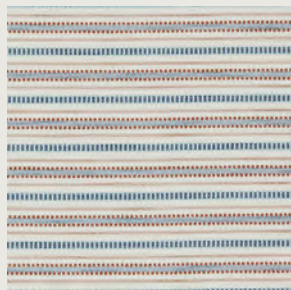
CASSIA 134547



CASSIA 134548



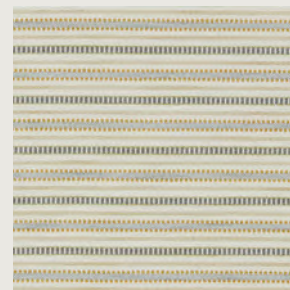
COVE 134549



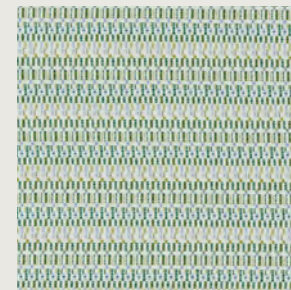
COVE 134550



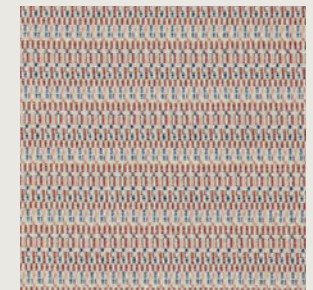
COVE 134551



COVE 134552



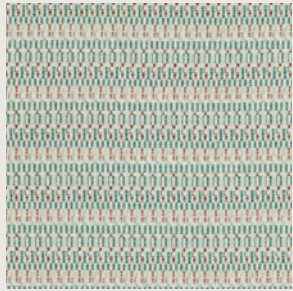
ELIDI 134519



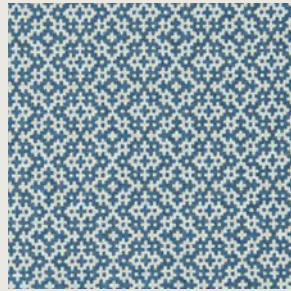
ELIDI 134520

CLICK ON THE PRODUCT IMAGES TO DISCOVER MORE

FABRIC INDEX



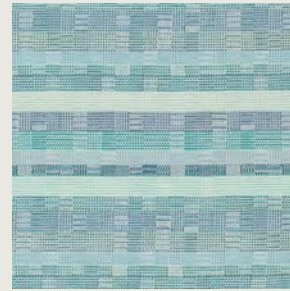
ELIDI 134521



LIORA 134531



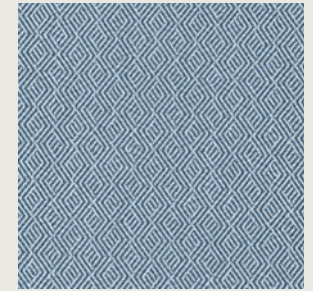
LIORA 134532



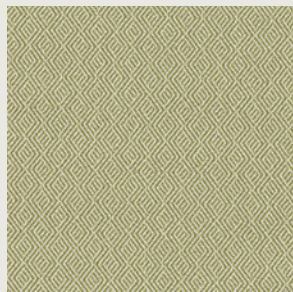
MIRA 134517



MIRA 134518



NALANI 134538



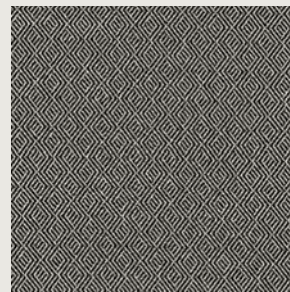
NALANI 134539



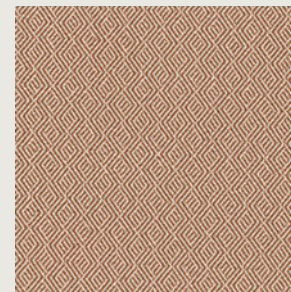
NALANI 134540



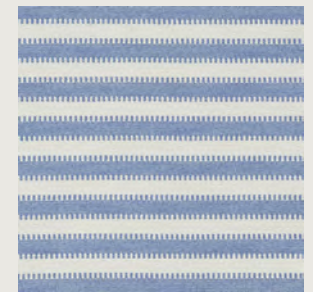
NALANI 134541



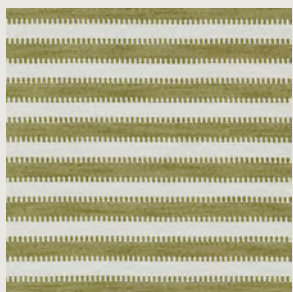
NALANI 134542



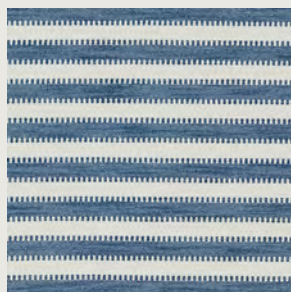
NALANI 134543



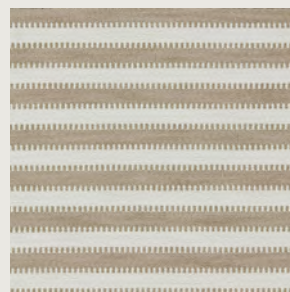
OCALA 134522



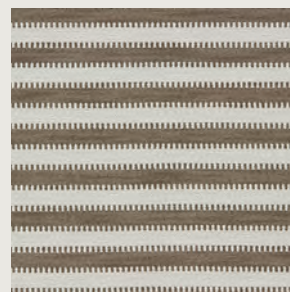
OCALA 134523



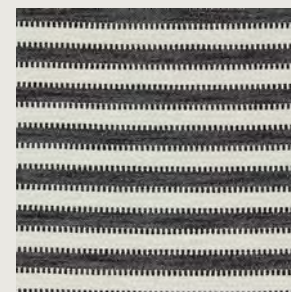
OCALA 134524



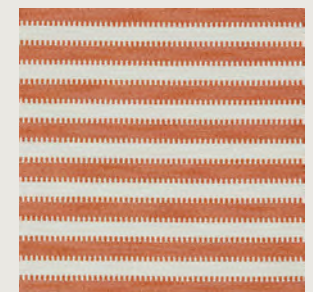
OCALA 134525



OCALA 134526



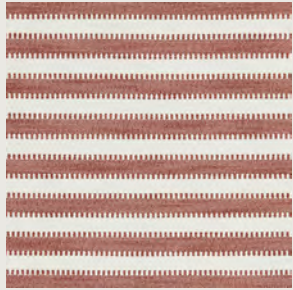
OCALA 134527



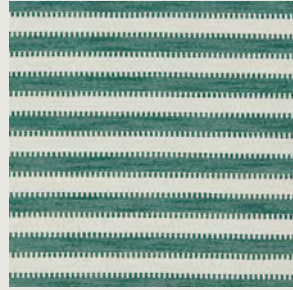
OCALA 134528

CLICK ON THE PRODUCT IMAGES TO DISCOVER MORE

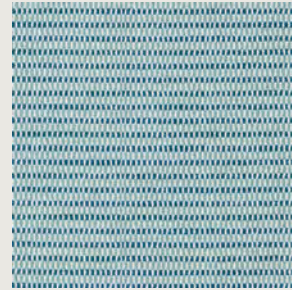
FABRIC INDEX



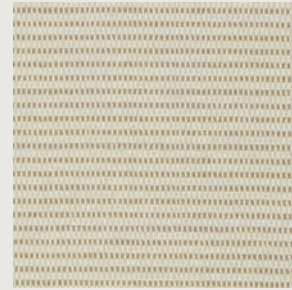
OCALA 134529



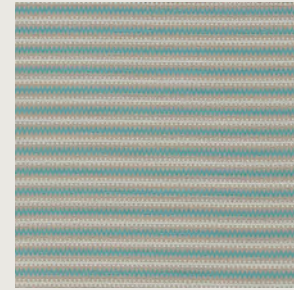
OCALA 134530



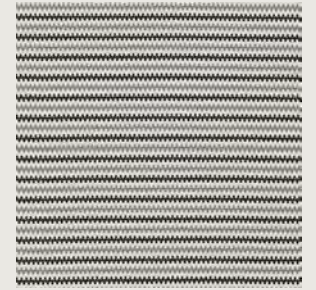
SOLEA 134510



SOLEA 134511



TAMAR 134544



TAMAR 134545



TAMAR 134546

CLICK ON THE PRODUCT IMAGES TO DISCOVER MORE



CONTACT INFORMATION

LONDON SHOWROOM - NEW

Unit 23G, Ground Floor, Central Dome, Chelsea Harbour Design Centre,
London, SW10 0XE
T: +44 (0)203 903 3700
E: showroom@sandersondesigngroup.com

NEW YORK SHOWROOM

D&D Building, 979 Third Avenue, Suite 905, New York, NY 10022
T: +1 212 319 7220
E: sales-ny@sandersondesigngroup.com

CHICAGO SHOWROOM

222 W Merchandise Mart Plaza, Suite 6-117A, Chicago, IL, 60654
T: +1 312 929 2058
E: sales-chicago@sandersondesigngroup.com

GERMANY SHOWROOM

Kronenstrasse 4, 76133 Karlsruhe
T: +49 721 981 985 60
E: verkauf@sandersondesigngroup.com

NETHERLANDS SHOWROOM

ETC Licht & Interieur, Randweg 20, 4104 AC Culemborg
T: +31 65349 3696
E: international@sandersondesigngroup.com

HARLEQUIN.SANDERSONDESIGNGROUP.COM

[@HARLEQUINFW](https://www.instagram.com/HARLEQUINFW)